

OCTOBER 2024

113L Transmission Line Structure Relocation

You are receiving this newsletter because you are near the proposed 113L Transmission Line Structure Relocation, and we want your input.

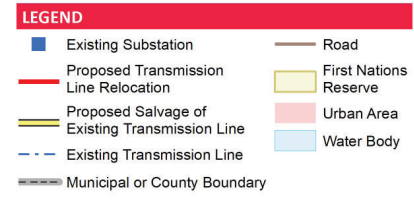
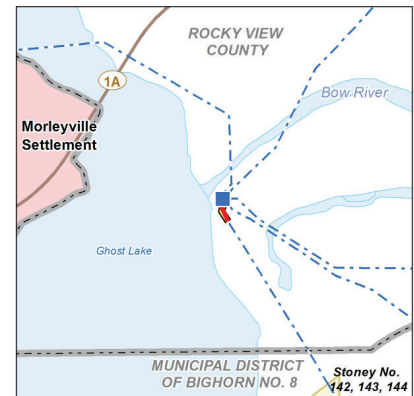
A structure on AltaLink’s 113L Transmission Line is deteriorating and needs to be urgently replaced. The proposed project is adjacent to AltaLink’s Ghost Substation near the Ghost Dam berm.

Project details

AltaLink is proposing to:

- remove one structure
- add two new structures

More information about the structure locations can be found on the included map.



ANTICIPATED PROJECT SCHEDULE

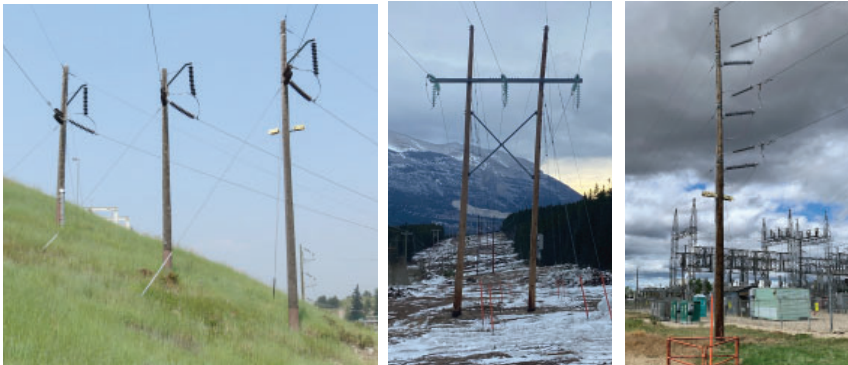
<p>OCTOBER 2024 Notify and consult with stakeholders</p>	<p>NOVEMBER 2024 File application with Alberta Utilities Commission (AUC)</p>	<p>NOVEMBER 2024 Start construction if project is approved</p>	<p>NOVEMBER 2024 Construction completed</p>
---	--	---	--

Although we attempt to follow the anticipated project schedule it is subject to change. We will continue to provide you with updated schedule information if required as the project progresses.

Proposed transmission structures

The existing structure is a three-pole wooden structure and is approximately 16 metres tall. The new structures will be one wood H-frame structure and one wood monopole structure between 16 to 18 metres tall with guy wires.

Additional **right-of-way** will not be required for the new structures.



Left: The existing three-pole wooden structure that needs to be replaced

Middle: The new H-frame structure will look similar to this picture

Right: The new monopole structure will look similar to this picture

Providing your input

We will contact landowners, residents, and occupants near the proposed project to gather input and address questions or concerns.

After our consultation and notification process is complete, we will file an application with the Alberta Utilities Commission (AUC) and it will be reviewed through a process in which stakeholders can participate.

We will notify stakeholders when we file the application and again once the AUC has reached a decision about the project. To learn more about the AUC process and how you can become involved, please refer to the brochure included in this package titled *Participating in the AUC's independent review process to consider facility applications*.

Electric and magnetic fields (EMF)

We understand that you may have concerns about exposure to EMF and we take those concerns seriously. Everyone is exposed to power frequency EMF from many sources, including power lines, building wiring, or appliances in your home.

Health Canada, the World Health Organization, and other agencies have not recommended that the public needs to take steps to limit their everyday exposure to EMF from high voltage transmission lines. This includes people that live near the edge of a transmission line right-of-way.

If you have any questions about EMF, please contact us:

Website: www.altalink.ca/emf

Email: emfdialogue@altalink.ca

Phone: 1-866-451-7817 (toll-free)

INCLUDED IN THIS INFORMATION PACKAGE:

- Project map
- AUC brochure: *Participating in the AUC's independent review process to consider facility applications*

Contact us

To learn more about the proposed project please contact:

ALTALINK

1-877-267-1453 (toll free)

E-mail: stakeholderrelations@altalink.ca

To subscribe to this project:

visit www.altalink.ca/projects, search for the project title, and click 'subscribe to updates'

For more information about how AltaLink protects your personal information:

visit our website at www.altalink.ca/privacy or contact us directly via e-mail privacy@altalink.ca or phone at 1-877-267-6760.

To learn more about the application and review process, please contact:

Alberta Utilities Commission (AUC)

780-427-4903 (toll-free by dialing 310-0000 before the number)

Email: consumer-relations@auc.ab.ca

DEFINITION:

Right-of-way | The right-of-way is a strip of land required for the construction and safe operation of a transmission line. A right-of-way refers to the physical space a transmission line encompasses including areas on either side of the line. The majority of the right-of-way can still be used by the landowner. Buildings cannot be placed on the right-of-way, but can be built up to the edge of the right-of-way.

Let's talk transmission



www.facebook.com/altalinktransmission



www.twitter.com/altalink

Sustainable
Electricity
Leader



Chef de file en
matière d'électricité
durable

ALTALINK
A BERKSHIRE HATHAWAY ENERGY COMPANY