



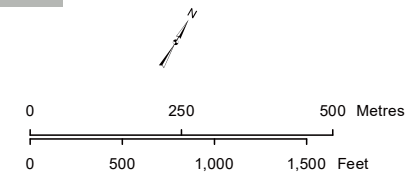
**NOTES**

- Where guy anchor boxes are required, they extend approximately 30 m from the applicable structure, unless otherwise indicated.
- A vegetation control easement (VCE) is required beyond the right-of-way. A VCE allows AltaLink to remove trees that may fall and contact the transmission line. The VCE is approximately 20 m wide, or less if there is an adjacent lease.
- Temporary workspace areas are approximately 60 m x 60 m (including overlap with the right-of-way) unless otherwise indicated.
- Northeast of point designation A40 the right-of-way for the Alternate Route is wider than 30 m in order to abut an adjacent pipeline right-of-way.
- Southwest of point designation B10, and between B10 and B15, AltaLink's right-of-way is wider than 30 m in order to abut an adjacent pipeline.
- AltaLink's right-of-way extends approximately 100 m beyond point designation B15 for an area to string the transmission line.

**LEGEND**

● Point Designation	--- Existing Transmission Line	▭ Right of Way Boundary	▭ River or Stream
● Kilometre Point	--- Proposed Fibre Optic Cable	▭ Proposed Temporary Workspace	▭ Municipal or County Boundary
--- Proposed Preferred Transmission Line	--- Access Trails / Off Right-of-Way Access	▭ Vegetation Control Easement	○ Telecommunication Tower
--- Proposed Alternate Transmission Line	▭ Proposed Substation Fenceline	● Wellsite	--- Pipeline
--- Proposed Switch Connection Line	▭ Proposed Substation Lease	--- Railway	--- Road
--- Proposed 714L Relocation	▭ Proposed Switching Station Fenceline		
--- Proposed Salvage	▭ Proposed Switching Station Lease		
■ Existing Substation	▭ Proposed Guy Anchor		

NO.: 123514303\_025  
 DRAWN: DS - STN  
 FILE NO.: 35035409  
 REVISION: 0.0.00.  
 DATE: 2024-06-27  
 AL FOLDER: Berland River



Source: Esri, Maxar, Earthstar Geographics, and the GIS User Community

STRIP MOSAIC **SM16**



**PROPOSED**  
 138 kV Transmission Line, Substation  
 and Switching Station:  
 Berland River Transmission Connection

*Although there is no reason to believe that there are any errors associated with the data used to generate this product or in the product itself, users of these data are advised that errors in the data may be present.*

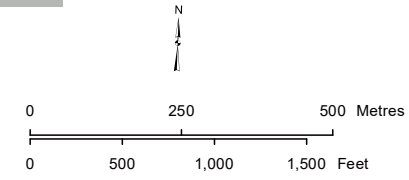


**NOTES**

- Where guy anchor boxes are required, they extend approximately 30 m from the applicable structure, unless otherwise indicated.
- A vegetation control easement (VCE) is required beyond the right-of-way. A VCE allows AltaLink to remove trees that may fall and contact the transmission line. The VCE is approximately 20 m wide, or less if there is an adjacent lease.
- Temporary workspace areas are approximately 60 m x 60 m (including overlap with the right-of-way) unless otherwise indicated.
- West of point designation B25, AltaLink's right-of-way is wider than 30 m in order to abut an adjacent pipeline lease.
- Between B30 and B40 AltaLink's right-of-way is wider than 30 m in order to abut an adjacent pipeline lease.

LEGEND	
● Point Designation	Existing Transmission Line
● Kilometre Point	Proposed Fibre Optic Cable
Proposed Preferred Transmission Line	Access Trails / Off Right-of-Way Access
Proposed Alternate Transmission Line	Proposed Substation Fenceline
Proposed Switch Connection Line	Proposed Substation Lease
Proposed 714L Relocation	Proposed Switching Station Fenceline
Proposed Salvage	Proposed Switching Station Lease
Existing Substation	Proposed Guy Anchor
Right of Way Boundary	River or Stream
Proposed Temporary Workspace	Municipal or County Boundary
Vegetation Control Easement	Telecommunication Tower
Wellsite	Pipeline
Railway	Road

NO.: 123514303\_025  
 DRAWN: DS - STN  
 FILE NO.: 35035409  
 REVISION: 0.0.00.  
 DATE: 2024-06-27  
 AL FOLDER: Berland River



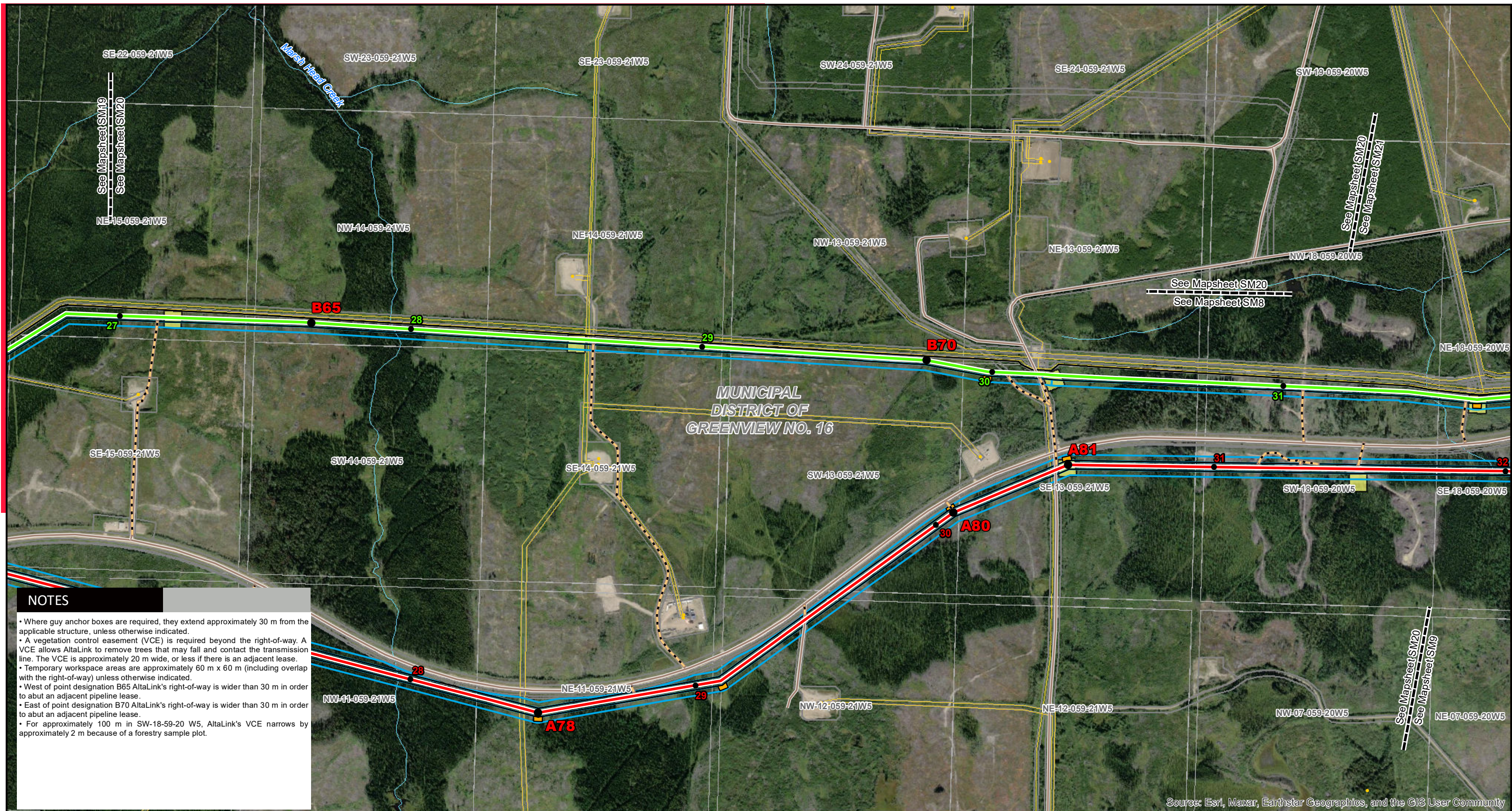
Although there is no reason to believe that there are any errors associated with the data used to generate this product or in the product itself, users of these data are advised that errors in the data may be present.

Source: Esri, Maxar, Earthstar Geographics, and the GIS User Community

STRIP MOSAIC **SM17**



**PROPOSED**  
 138 kV Transmission Line, Substation  
 and Switching Station:  
 Berland River Transmission Connection



**NOTES**

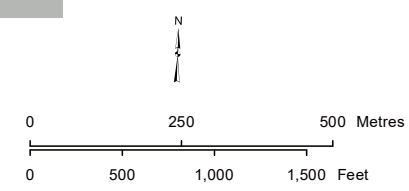
- Where guy anchor boxes are required, they extend approximately 30 m from the applicable structure, unless otherwise indicated.
- A vegetation control easement (VCE) is required beyond the right-of-way. A VCE allows AltaLink to remove trees that may fall and contact the transmission line. The VCE is approximately 20 m wide, or less if there is an adjacent lease.
- Temporary workspace areas are approximately 60 m x 60 m (including overlap with the right-of-way) unless otherwise indicated.
- West of point designation B65 AltaLink's right-of-way is wider than 30 m in order to abut an adjacent pipeline lease.
- East of point designation B70 AltaLink's right-of-way is wider than 30 m in order to abut an adjacent pipeline lease.
- For approximately 100 m in SW-18-59-20 W5, AltaLink's VCE narrows by approximately 2 m because of a forestry sample plot.

Source: Esri, Maxar, Earthstar Geographics, and the GIS User Community

**LEGEND**

● Point Designation	--- Existing Transmission Line	□ Right of Way Boundary	— River or Stream
● Kilometre Point	--- Proposed Fibre Optic Cable	□ Proposed Temporary Workspace	□ Municipal or County Boundary
--- Proposed Preferred Transmission Line	--- Access Trails / Off Right-of-Way Access	□ Vegetation Control Easement	○ Telecommunication Tower
--- Proposed Alternate Transmission Line	□ Proposed Substation Fenceline	● Wellsite	— Pipeline
--- Proposed Switch Connection Line	□ Proposed Substation Lease	— Railway	— Road
--- Proposed 714L Relocation	□ Proposed Switching Station Fenceline		
--- Proposed Salvage	□ Proposed Switching Station Lease		
■ Existing Substation	□ Proposed Guy Anchor		

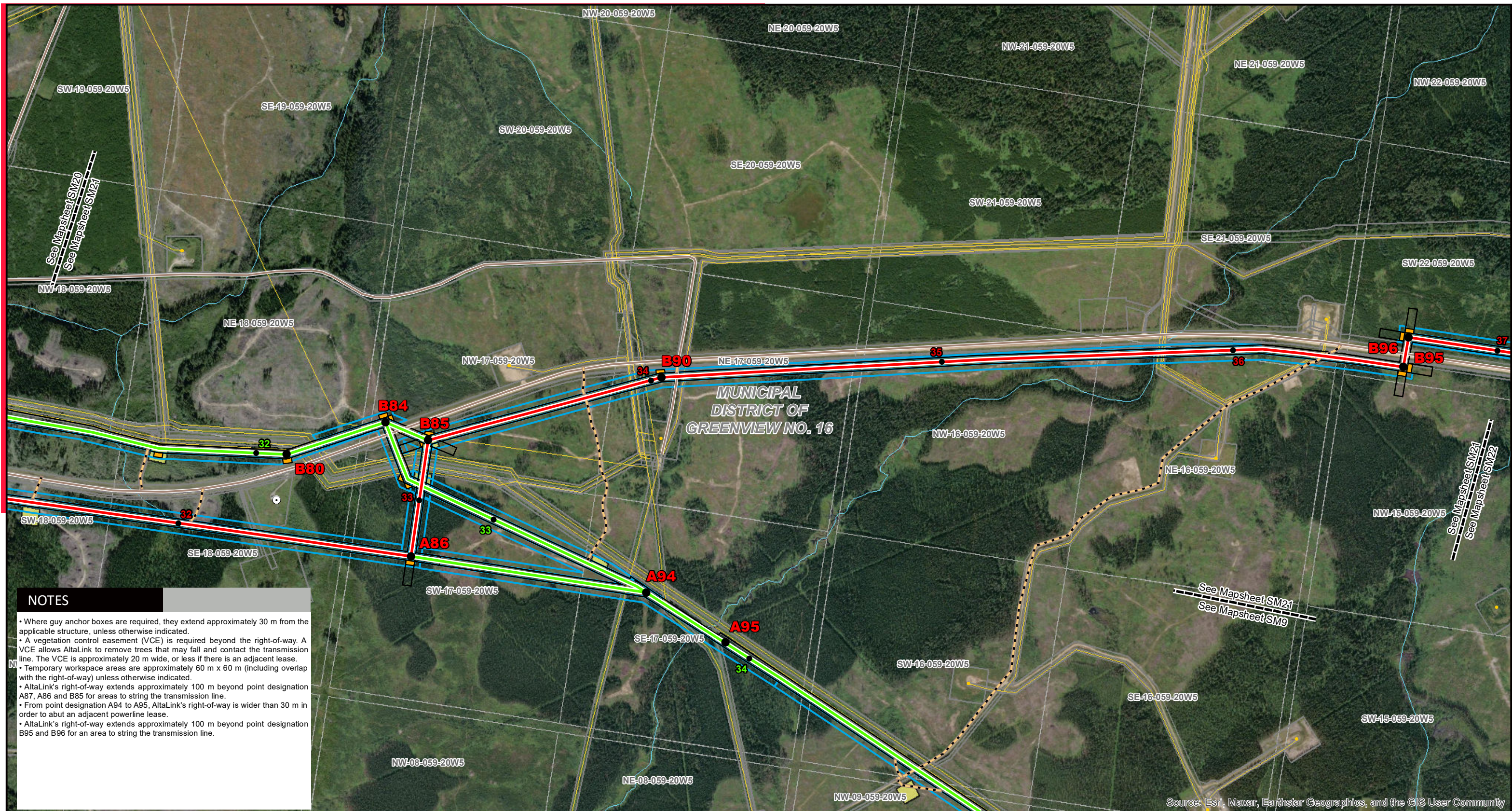
NO.: 123514303\_025  
 DRAWN: DS - STN  
 FILE NO.: 35035409  
 REVISION: 0.0.00.  
 DATE: 2024-06-27  
 AL FOLDER: Berland River



Although there is no reason to believe that there are any errors associated with the data used to generate this product or in the product itself, users of these data are advised that errors in the data may be present.

**STRIP MOSAIC SM20**

**PROPOSED**  
 138 kV Transmission Line, Substation and Switching Station:  
 Berland River Transmission Connection

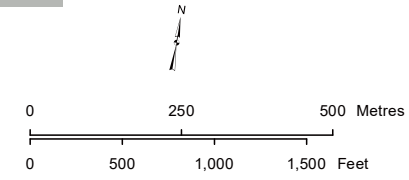


**NOTES**

- Where guy anchor boxes are required, they extend approximately 30 m from the applicable structure, unless otherwise indicated.
- A vegetation control easement (VCE) is required beyond the right-of-way. A VCE allows AltaLink to remove trees that may fall and contact the transmission line. The VCE is approximately 20 m wide, or less if there is an adjacent lease.
- Temporary workspace areas are approximately 60 m x 60 m (including overlap with the right-of-way) unless otherwise indicated.
- AltaLink's right-of-way extends approximately 100 m beyond point designation A87, A86 and B85 for areas to string the transmission line.
- From point designation A94 to A95, AltaLink's right-of-way is wider than 30 m in order to abut an adjacent powerline lease.
- AltaLink's right-of-way extends approximately 100 m beyond point designation B95 and B96 for an area to string the transmission line.

LEGEND			
● Point Designation	--- Existing Transmission Line	□ Right of Way Boundary	— River or Stream
● Kilometre Point	--- Proposed Fibre Optic Cable	□ Proposed Temporary Workspace	□ Municipal or County Boundary
--- Proposed Preferred Transmission Line	--- Access Trails / Off Right-of-Way Access	□ Vegetation Control Easement	○ Telecommunication Tower
--- Proposed Alternate Transmission Line	□ Proposed Substation Fenceline	● Wellsite	— Pipeline
--- Proposed Switch Connection Line	□ Proposed Substation Lease	— Railway	— Road
--- Proposed 714L Relocation	□ Proposed Switching Station Fenceline		
--- Proposed Salvage	□ Proposed Switching Station Lease		
■ Existing Substation	□ Proposed Guy Anchor		

NO.: 123514303\_025  
 DRAWN: DS - STN  
 FILE NO.: 35035409  
 REVISION: 0.0.00.  
 DATE: 2024-06-27  
 AL FOLDER: Berland River



Although there is no reason to believe that there are any errors associated with the data used to generate this product or in the product itself, users of these data are advised that errors in the data may be present.

Source: Esri, Maxar, Earthstar Geographics, and the GIS User Community

STRIP MOSAIC **SM21**



**PROPOSED**  
 138 kV Transmission Line, Substation and Switching Station:  
 Berland River Transmission Connection