



NOTES

AltaLink is proposing two options for the rebuild of 185L and 412L transmission lines. The Single Circuit Option proposes to rebuild both transmission lines along their existing alignments. The Double Circuit Option proposes to consolidate both facilities into one double circuit transmission line. The alignment of this double circuit transmission line will be approximately 3 m south of the existing 412L transmission line.

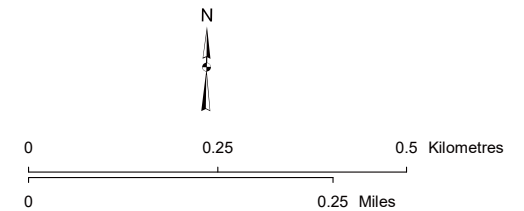
For the Single Circuit Option, approximately 10 additional metres will be required on both the north and south sides of the existing rights-of-way. For the Double Circuit Option, no additional right-of-way is required.

AltaLink has identified areas for construction workspace adjacent to existing structures. These areas are approximately 40 m x 25 m.

LEGEND

Existing Substation	Church	Urban Area
Proposed Transmission Line Rebuild - Single Circuit Option	Hamlet or Locality	Water Body
Proposed Transmission Line Rebuild - Double Circuit Option	Residence	
Existing Transmission Line	Railway	
Access Trail	Road	
Construction Workspace	Airport	
Laydown Yard	Environmentally Significant Area	

NO:
 DRAWN: SG - AL
 FILE NO.: XXXXXXX
 REVISION: 0.00.00
 AL FOLDER: 185L_412L_Transmission_Line_Rebuild
DATE: 2023-10-25



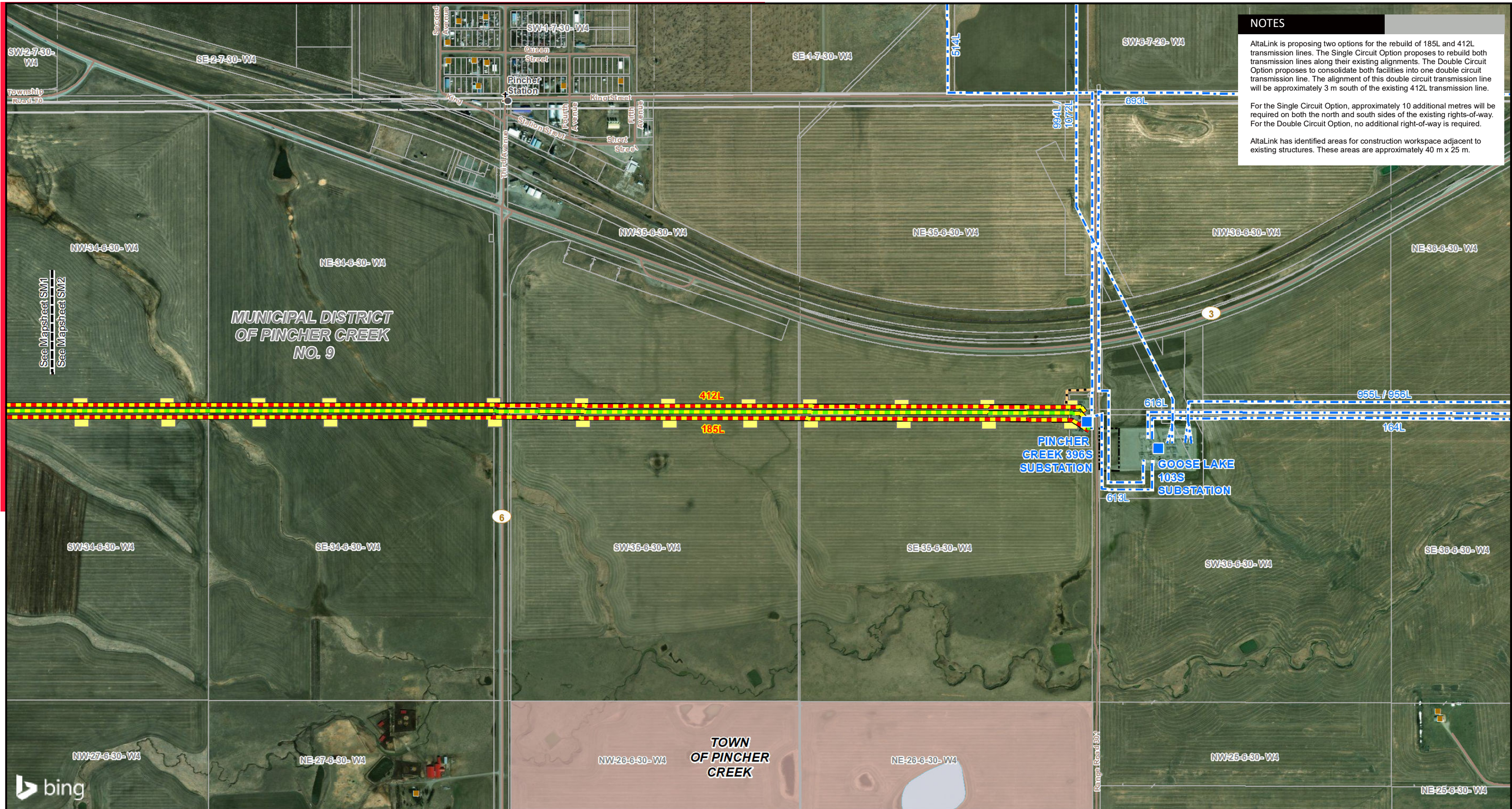
STRIP MOSAIC **SM1**



PROPOSED

185L/ 412L Transmission Line Rebuild

Service Layer Credits: © 2023 Microsoft Corporation © 2023 Maxar ©CNES (2023) Distribution Airbus DS
 Although there is no reason to believe that there are any errors associated with the data used to generate this product or in the product itself, users of these data are advised that errors in the data may be present.



NOTES

AltaLink is proposing two options for the rebuild of 185L and 412L transmission lines. The Single Circuit Option proposes to rebuild both transmission lines along their existing alignments. The Double Circuit Option proposes to consolidate both facilities into one double circuit transmission line. The alignment of this double circuit transmission line will be approximately 3 m south of the existing 412L transmission line.

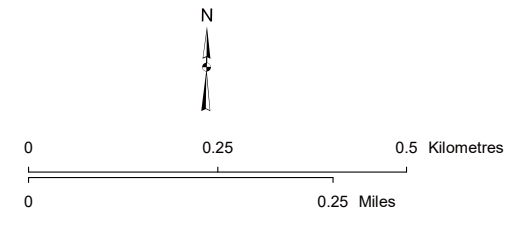
For the Single Circuit Option, approximately 10 additional metres will be required on both the north and south sides of the existing rights-of-way. For the Double Circuit Option, no additional right-of-way is required.

AltaLink has identified areas for construction workspace adjacent to existing structures. These areas are approximately 40 m x 25 m.

LEGEND

Existing Substation	Church	Urban Area
Proposed Transmission Line Rebuild - Single Circuit Option	Hamlet or Locality	Water Body
Proposed Transmission Line Rebuild - Double Circuit Option	Residence	
Existing Transmission Line	Railway	
Access Trail	Road	
Construction Workspace	Airport	
Laydown Yard	Environmentally Significant Area	

NO:
 DRAWN: SG - AL
 FILE NO.: XXXXXXX
 REVISION: 0.00.00
 AL FOLDER: 185L_412L_Transmission_Line_Rebuild
DATE: 2023-10-25



STRIP MOSAIC **SM2**



PROPOSED

185L/ 412L Transmission Line Rebuild

Service Layer Credits: © 2023 Microsoft Corporation © 2023 Maxar ©CNES (2023) Distribution Airbus DS
 Although there is no reason to believe that there are any errors associated with the data used to generate this product or in the product itself, users of these data are advised that errors in the data may be present.