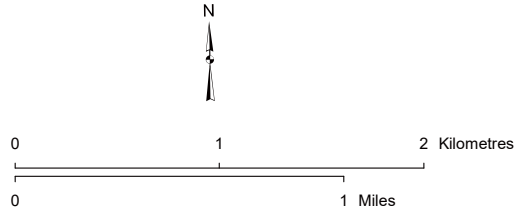


**LEGEND**

- Potential Structure Modification or Replacement
- Existing Transmission Line
- Map Sheet
- +— Railway
- Road
- Other Protected Area
- Urban Area
- Water Body

NO: 35036214 - 6201  
 DRAWN: SG - AL  
 FILE NO.: XXXXXXX  
 REVISION: 0.00.03  
 AL FOLDER: 890L Capacity Restoration Project  
**DATE: 2024-03-22**



STRIP INDEX **SI**

**POTENTIAL**

890L Capacity Restoration Project

*Although there is no reason to believe that there are any errors associated with the data used to generate this product or in the product itself, users of these data are advised that errors in the data may be present.*



**NOTES**

AltaLink is proposing up to approximately 25 x 40 m of construction workspace around some structures and 8 m wide access trails in some locations in order to facilitate construction activities.

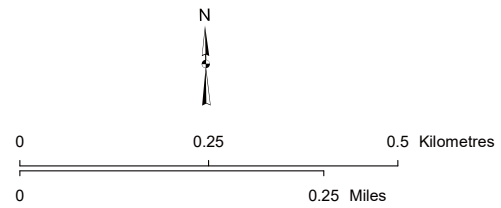


**LEGEND**

- Potential Structure Modification or Replacement
- - - Existing Transmission Line
- Access Trail
- Construction Workspace
- Church
- School
- Wellsite
- Pipeline
- Railway
- Road
- Environmentally Significant Area
- Mill
- Oil and Gas Plant
- Other Protected Area
- Urban Area
- Water Body

NO: 35036214 - 6201  
 DRAWN: SG - AL  
 FILE NO.: XXXXXXXX  
 REVISION: 0.01.03  
 AL FOLDER: 890L Capacity Restoration Project  
**DATE: 2024-03-22**

*Service Layer Credits: Source: Esri, Maxar, Earthstar Geographics, and the GIS User Community  
 Although there is no reason to believe that there are any errors associated with the data used to generate this product or in the product itself, users of these data are advised that errors in the data may be present.*



**STRIP MOSAIC SM1**



**POTENTIAL**

**890L Capacity Restoration Project**



**NOTES**

AltaLink is proposing up to approximately 25 x 40 m of construction workspace around some structures and 8 m wide access trails in some locations in order to facilitate construction activities.

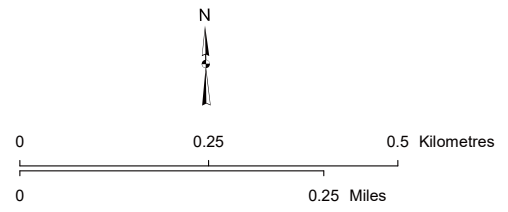


**LEGEND**

- Potential Structure Modification or Replacement
- - - Existing Transmission Line
- Access Trail
- Construction Workspace
- ⚓ Church
- 🎓 School
- Wellsite
- Pipeline
- Railway
- Road
- Environmentally Significant Area
- Mill
- Oil and Gas Plant
- Other Protected Area
- Urban Area
- Water Body

NO: 35036214 - 6201  
 DRAWN: SG - AL  
 FILE NO.: XXXXXXXX  
 REVISION: 0.01.03  
 AL FOLDER: 890L Capacity Restoration Project  
**DATE: 2024-03-22**

*Service Layer Credits: Source: Esri, Maxar, Earthstar Geographics, and the GIS User Community  
 Although there is no reason to believe that there are any errors associated with the data used to generate this product or in the product itself, users of these data are advised that errors in the data may be present.*



**STRIP MOSAIC SM2**



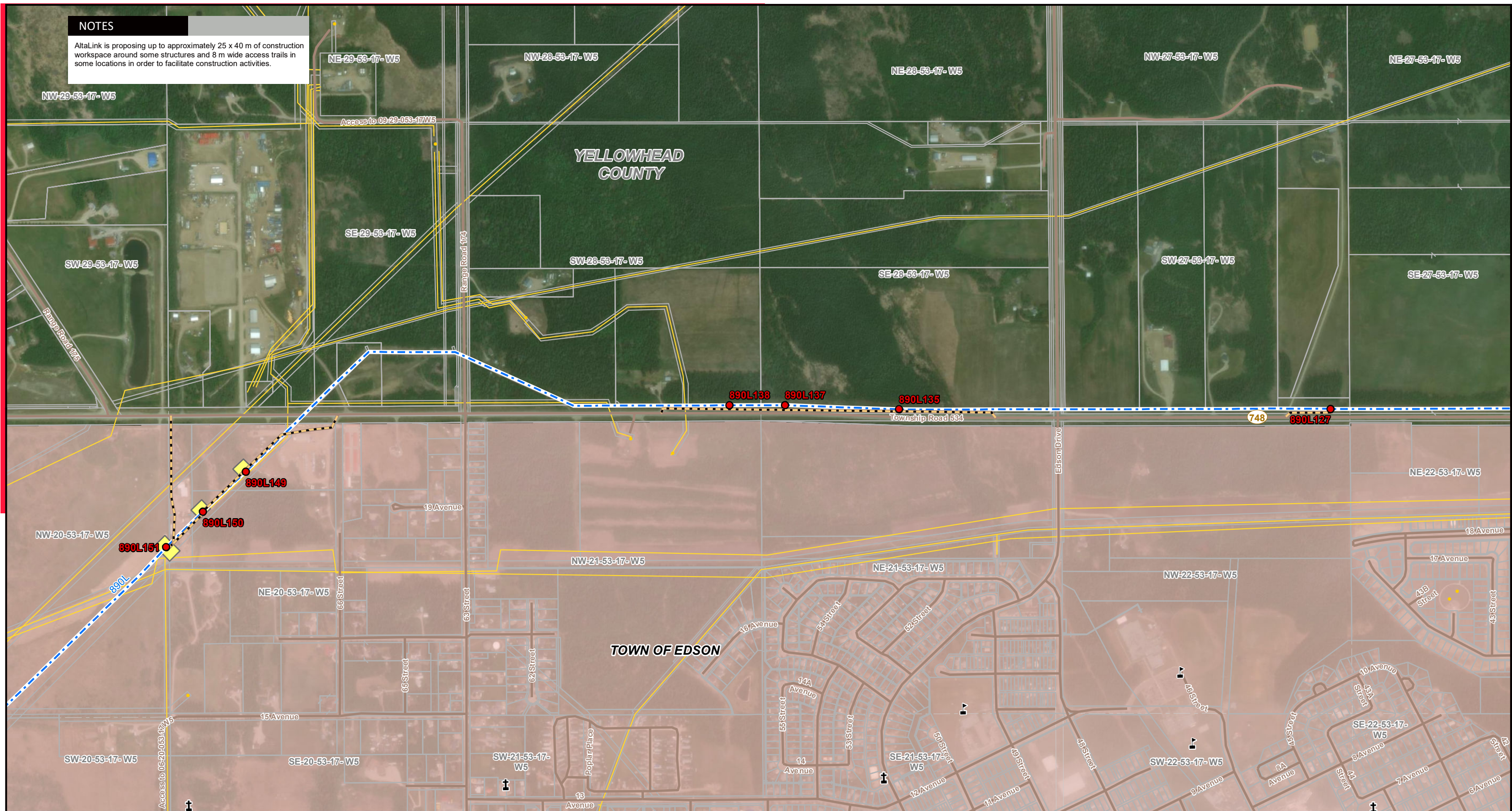
**POTENTIAL**

**890L Capacity Restoration Project**



**NOTES**

AltaLink is proposing up to approximately 25 x 40 m of construction workspace around some structures and 8 m wide access trails in some locations in order to facilitate construction activities.

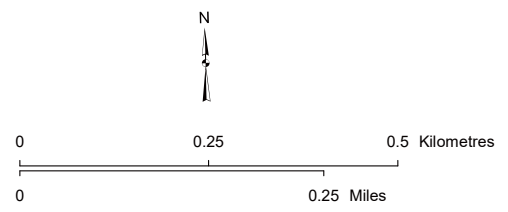


**LEGEND**

- Potential Structure Modification or Replacement
- - - Existing Transmission Line
- - - Access Trail
- Construction Workspace
- ⛪ Church
- ⚙️ School
- Wellsite
- Pipeline
- Railway
- Road
- Environmentally Significant Area
- Mill
- Oil and Gas Plant
- Other Protected Area
- Urban Area
- Water Body

NO: 35036214 - 6201  
 DRAWN: SG - AL  
 FILE NO.: XXXXXXXX  
 REVISION: 0.01.03  
 AL FOLDER: 890L Capacity Restoration Project  
**DATE: 2024-03-22**

*Service Layer Credits: Source: Esri, Maxar, Earthstar Geographics, and the GIS User Community  
 Although there is no reason to believe that there are any errors associated with the data used to generate this product or in the product itself, users of these data are advised that errors in the data may be present.*



**STRIP MOSAIC SM3**



**POTENTIAL**

**890L Capacity Restoration Project**