

November 13, 2024

Canmore area vegetation management

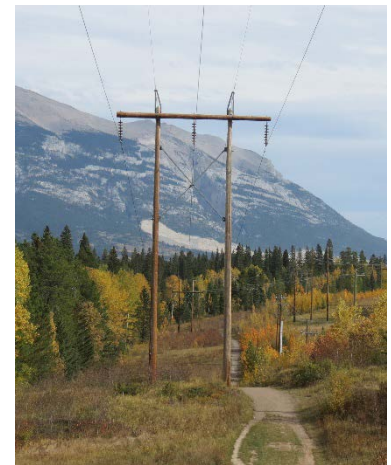
You are receiving this letter because you are near upcoming vegetation management work in the Canmore area and we want to ensure you are informed of what you might see and hear.

Project details

AltaLink owns and operates the high-voltage electricity infrastructure in the Canmore area, including the transmission lines 76L and 84L. AltaLink has identified mature trees that are in danger of falling into the lines and require removal to minimize wildfire risk and ensure the safe and reliable operation of the power system. AltaLink will selectively remove these danger trees from the edges of and just outside its rights-of-way from mid-November until the end of December 2024, with clean up occurring in January 2025.

Work along 76L: AltaLink is removing danger trees along six kilometres of 76L, which runs parallel to Highway 1 as it enters Canmore from the southeast and connects to the Spray Substation located at the southwest corner of the Rundle Forebay Reservoir. 76L runs parallel to 113L, which AltaLink rebuilt in 2022. AltaLink is conducting vegetation management only on the 76L side of the right-of-way.

Work along 84L: AltaLink is removing danger trees along 1.6 kilometres of 84L, which begins at the Spray Substation and runs northeast until it connects to the Rundle Substation located at the northern edge of the Town of Canmore on the west side of the Bow River. AltaLink is conducting vegetation management on both sides of the 84L right-of-way. Please see the map included with this letter.



The structures along 76L and 84L are H-frame structures like the one above.

What you can expect

Throughout this project, you may see and hear crews performing selective tree removal using chainsaws. Crews will be using equipment including harvesters, backhoes and logging trucks. There may be temporary trail closures or diversions where the walking trail passes by work zones; most of the areas will be passable along or just off the designated trails. Crews will safely burn vegetation debris, including branches. These vegetation burnings will be highly controlled and follow strict safety protocols. Smoke may be visible in the area.

Contact us

We are available to address any questions or concerns you may have. Please contact us at stakeholderrelations@altalink.ca or 1-877-267-1453. You can find out more about AltaLink's vegetation management processes and wildfire mitigation plan on www.altalink.ca.

Sincerely,

Kris Gladue
Manager, Stakeholder Engagement