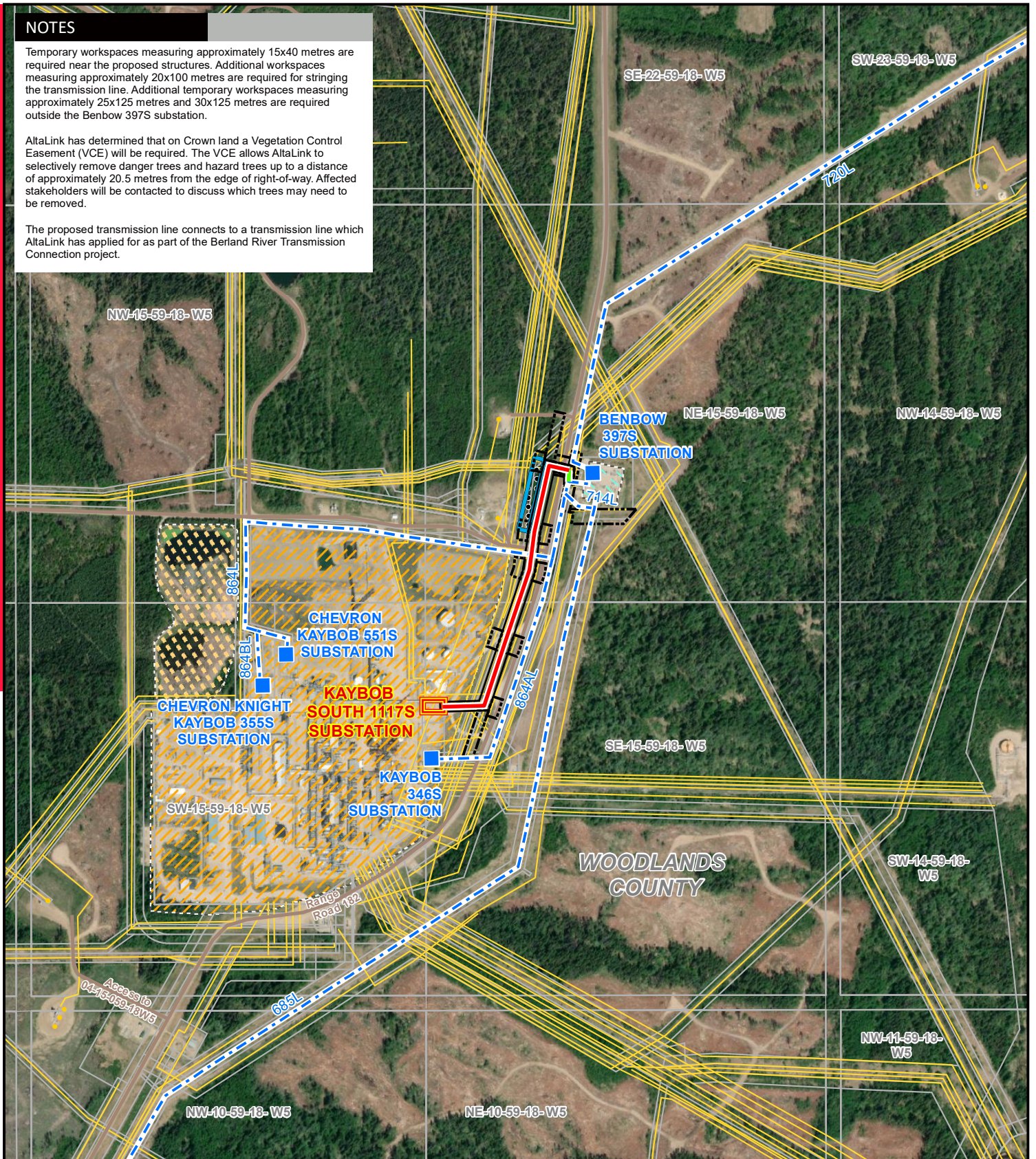


NOTES

Temporary workspaces measuring approximately 15x40 metres are required near the proposed structures. Additional workspaces measuring approximately 20x100 metres are required for stringing the transmission line. Additional temporary workspaces measuring approximately 25x125 metres and 30x125 metres are required outside the Benbow 397S substation.

AltaLink has determined that on Crown land a Vegetation Control Easement (VCE) will be required. The VCE allows AltaLink to selectively remove danger trees and hazard trees up to a distance of approximately 20.5 metres from the edge of right-of-way. Affected stakeholders will be contacted to discuss which trees may need to be removed.

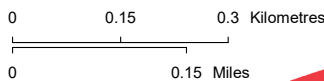
The proposed transmission line connects to a transmission line which AltaLink has applied for as part of the Berland River Transmission Connection project.



LEGEND

- Existing Substation
- Proposed Transmission Line
- Applied for as Part of the Berland River Transmission Connection Project
- Existing Transmission Line
- Up to 24m Right of Way Boundary
- Proposed Customer Substation
- Temporary Workspace
- Vegetation Control Easement
- Wellsite
- Pipeline
- Road
- Oil and Gas Plant
- Power Generation Station
- Tailing Pile

NO: 35036000
 DRAWN: SG - AL
 FILE NO.: XXXXXXXX
 REVISION: 0.03.06
 AL FOLDER: Kaybob South 3 Cogen
DATE: 2025-01-06



DETAIL PHOTO DP1



PROPOSED
 Kaybob South 3 Cogen

Service Layer Credits: Source: Esri, Maxar, Earthstar Geographics, and the GIS User Community
 Although there is no reason to believe that there are any errors associated with the data used to generate this product or in the product itself, users of these data are advised that errors in the data may be present.