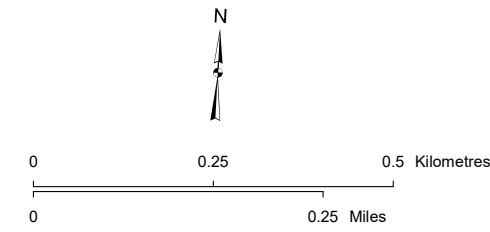


LEGEND	
● Point Designation	● Wellsite
▲ Potential Telecommunication Tower / Tour de telecommunications	— Pipeline
⊗ Potential Deadend Structure	— Road
⊗ Potential Tangent Structure	■ Water Body
● Potential Salvage of Existing Structure	— Potential Right of Way Boundary
— Potential Transmission Line	— Access Trail
— Existing Transmission Line	⊗ Proposed Customer Power Plant Fenceline
	□ Proposed Customer Substation
	■ Potential Guy Anchor Easement
	■ Temporary Workspace
	■ Residence

NO: 35034419 - 6201  
 DRAWN: SG - AL  
 FILE NO.: XXXXXXX  
 REVISION: 0.03.05  
 AL FOLDER: Eastervale Solar Connection  
**DATE: 2024-10-16**



**STRIP MOSAIC SM1**

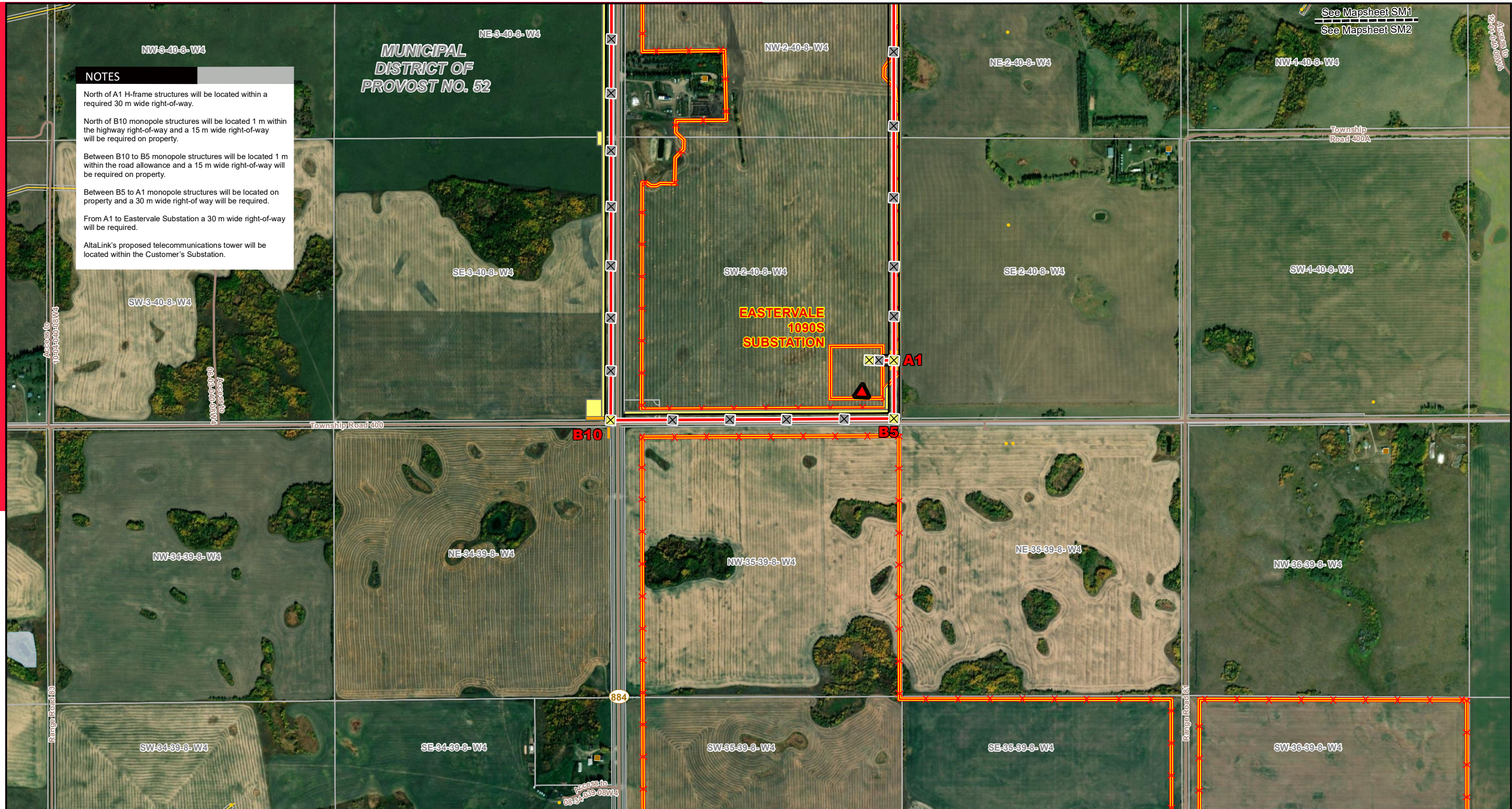


**POTENTIAL**

**Eastervale Solar and Storage Connection**

*Service Layer Credits: Source: Esri, Maxar, Earthstar Geographics, and the GIS User Community  
 Although there is no reason to believe that there are any errors associated with the data used to generate this product or in the product itself, users of these data are advised that errors in the data may be present.*

See Mapsheet SM1  
 See Mapsheet SM2



**NOTES**

North of A1 H-frame structures will be located within a required 30 m wide right-of-way.

North of B10 monopole structures will be located 1 m within the highway right-of-way and a 15 m wide right-of-way will be required on property.

Between B10 to B5 monopole structures will be located 1 m within the road allowance and a 15 m wide right-of-way will be required on property.

Between B5 to A1 monopole structures will be located on property and a 30 m wide right-of-way will be required.

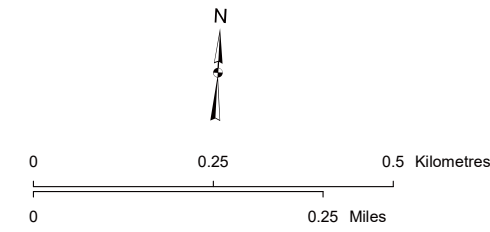
From A1 to Eastervale Substation a 30 m wide right-of-way will be required.

AltaLink's proposed telecommunications tower will be located within the Customer's Substation.

**LEGEND**

● Point Designation	— Potential Right of Way Boundary	● Wellsite
▲ Potential Telecommunication Tower / Tour de telecommunications	— Access Trail	— Pipeline
⊗ Potential Deadend Structure	⊗ Proposed Customer Power Plant Fenceline	— Road
⊗ Potential Tangent Structure	⊗ Proposed Customer Substation	■ Water Body
● Potential Salvage of Existing Structure	■ Potential Guy Anchor Easement	
— Potential Transmission Line	■ Temporary Workspace	
— Existing Transmission Line	■ Residence	

NO: 35034419 - 6201  
 DRAWN: SG - AL  
 FILE NO.: XXXXXXX  
 REVISION: 0.03.05  
 AL FOLDER: Eastervale Solar Connection  
**DATE: 2024-10-16**



See Mapsheet SM1  
 See Mapsheet SM2

Township Road 400A

Township Road 400

884

STRIP MOSAIC **SM2**



**POTENTIAL**

Eastervale Solar and Storage Connection

Service Layer Credits: Source: Esri, Maxar, Earthstar Geographics, and the GIS User Community  
 Although there is no reason to believe that there are any errors associated with the data used to generate this product or in the product itself, users of these data are advised that errors in the data may be present.