

NOTES

NOTES IN THIS SECTION DESCRIBE COMMENTS AND MODIFICATIONS THAT PERTAIN TO A SPECIFIC SECTION OF THE TRANSMISSION ROUTE.

From A1 to Lone Butte Substation a 20 m wide right-of-way will be required.

Between A1 to A10 monopole structures will be located 1 m within the road allowance and a 15 m wide right-of-way will be required on property.

Between A10 to A15 monopole structures will be located 1 m within the road allowance and a 15 m wide right-of-way will be required on property.

West of A15 monopole structures will be located 1 m within the road allowance and a 15 m wide right-of-way will be required on property.

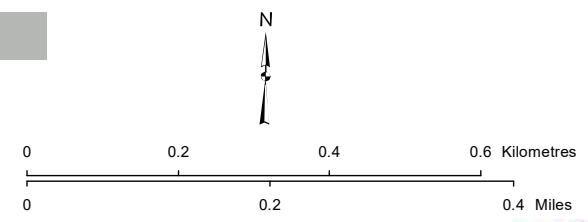
South of A15 monopole structures will be located 1 m within the undeveloped road allowance and a 15 m wide right-of-way will be required on property.

Construction workspace and access trails will be required along the potential transmission line. Guy anchors will be required at deflections. Further engineering will be completed and AltaLink will consult with affected stakeholders on additional details when available.

LEGEND

- Point Designation
- Potential Transmission Line
- Existing Transmission Line
- Right-of-Way Boundary
- ▭ Proposed Customer Substation
- ▭ Proposed Substation Target Area
- Residence
- Wellsite
- Municipal or County Boundary
- Pipeline
- River or Stream
- Road
- ▭ Crown Land
- ▭ Gravel Pit
- ▭ Oil and Gas Plant
- ▭ Water Body

NO:
 DRAWN: CH - Maskwa
 FILE NO.: Lone Butte-SM1
 REVISION: 0.00.00
 AL FOLDER: Lone Butte
DATE: 2024-11-26



Photography dated: 2022. Source: Esri, Maxar, Earthstar Geographics, and the GIS User Community
 Although there is no reason to believe that there are any errors associated with the data used to generate this product or in the product itself, users of these data are advised that errors in the data may be present.

STRIP MOSAIC SM1



POTENTIAL
 Lone Butte Solar Connection Project
 240 kV TRANSMISSION LINE



NOTES

NOTES IN THIS SECTION DESCRIBE COMMENTS AND MODIFICATIONS THAT PERTAIN TO A SPECIFIC SECTION OF THE TRANSMISSION ROUTE:

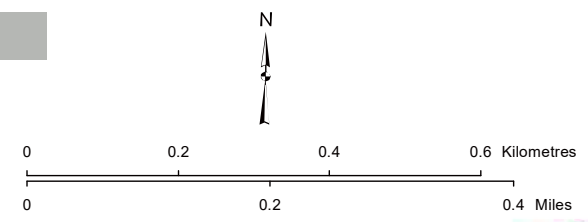
The potential transmission line will have monopole structures located 1 m within the undeveloped road allowance and a 15 m wide right-of-way will be required on property.

Construction workspace and access trails will be required along the potential transmission line. Guy anchors will be required at deflections. Further engineering will be completed and AltaLink will consult with affected stakeholders on additional details when available.

LEGEND

- Point Designation
- Potential Transmission Line
- - - Existing Transmission Line
- Right-of-Way Boundary
- ▭ Proposed Customer Substation
- ▭ Proposed Substation Target Area
- Residence
- Wellsite
- Municipal or County Boundary
- Pipeline
- River or Stream
- Road
- ▭ Crown Land
- ▭ Gravel Pit
- ▭ Oil and Gas Plant
- ▭ Water Body

NO:
 DRAWN: CH - Maskwa
 FILE NO.: Lone Butte-SM1
 REVISION: 0.00.00
 AL FOLDER: Lone Butte
DATE: 2024-11-26



Photography dated: 2022. Source: Esri, Maxar, Earthstar Geographics, and the GIS User Community
 Although there is no reason to believe that there are any errors associated with the data used to generate this product or in the product itself, users of these data are advised that errors in the data may be present.

STRIP MOSAIC **SM2**

POTENTIAL
 Lone Butte Solar Connection Project
 240 kV TRANSMISSION LINE



NOTES

NOTES IN THIS SECTION DESCRIBE COMMENTS AND MODIFICATIONS THAT PERTAIN TO A SPECIFIC SECTION OF THE TRANSMISSION ROUTE:

North of A40 monopole structures will be located 1 m within the undeveloped road allowance and a 15 m wide right-of-way will be required on property.

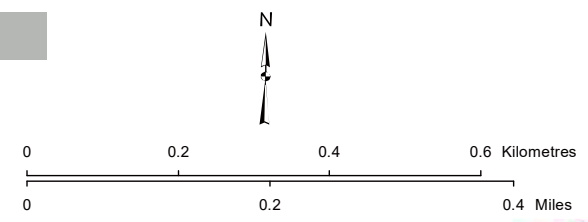
West of A40 monopole structures will be located 1 m within the road allowance and a 15 m wide right-of-way will be required on property.

Construction workspace and access trails will be required along the potential transmission line. Guy anchors will be required at deflections. Further engineering will be completed and AltaLink will consult with affected stakeholders on additional details when available.

LEGEND

- Point Designation
- Potential Transmission Line
- - - Existing Transmission Line
- Right-of-Way Boundary
- ▭ Proposed Customer Substation
- ▭ Proposed Substation Target Area
- Residence
- Wellsite
- Municipal or County Boundary
- Pipeline
- River or Stream
- Road
- ▭ Crown Land
- ▭ Gravel Pit
- ▭ Oil and Gas Plant
- ▭ Water Body

NO:
 DRAWN: CH - Maskwa
 FILE NO.: Lone Butte-SM1
 REVISION: 0.00.00
 AL FOLDER: Lone Butte
DATE: 2024-11-26



Photography dated: 2022. Source: Esri, Maxar, Earthstar Geographics, and the GIS User Community
 Although there is no reason to believe that there are any errors associated with the data used to generate this product or in the product itself, users of these data are advised that errors in the data may be present.

STRIP MOSAIC SM3



POTENTIAL
 Lone Butte Solar Connection Project
 240 kV TRANSMISSION LINE



NOTES

NOTES IN THIS SECTION DESCRIBE COMMENTS AND MODIFICATIONS THAT PERTAIN TO A SPECIFIC SECTION OF THE TRANSMISSION ROUTE.

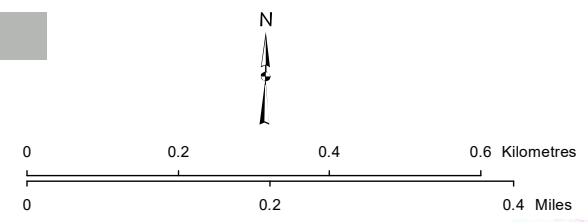
The potential transmission line will have monopole structures located 1 m within the road allowance and a 15 m wide right-of-way will be required on property.

Construction workspace and access trails will be required along the potential transmission line. Guy anchors will be required at deflections. Further engineering will be completed and AltaLink will consult with affected stakeholders on additional details when available.

LEGEND

- Point Designation
- Potential Transmission Line
- - - Existing Transmission Line
- Right-of-Way Boundary
- ▭ Proposed Customer Substation
- ▭ Proposed Substation Target Area
- Residence
- Wellsite
- Municipal or County Boundary
- Pipeline
- River or Stream
- Road
- ▭ Crown Land
- ▭ Gravel Pit
- ▭ Oil and Gas Plant
- ▭ Water Body

NO:
 DRAWN: CH - Maskwa
 FILE NO.: Lone Butte-SM1
 REVISION: 0.00.00
 AL FOLDER: Lone Butte
DATE: 2024-11-26



Photography dated: 2022. Source: Esri, Maxar, Earthstar Geographics, and the GIS User Community
 Although there is no reason to believe that there are any errors associated with the data used to generate this product or in the product itself, users of these data are advised that errors in the data may be present.

STRIP MOSAIC SM4



POTENTIAL
 Lone Butte Solar Connection Project
 240 kV TRANSMISSION LINE



NOTES

NOTES IN THIS SECTION DESCRIBE COMMENTS AND MODIFICATIONS THAT PERTAIN TO A SPECIFIC SECTION OF THE TRANSMISSION ROUTE.

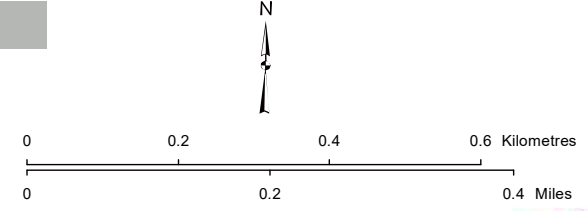
The potential transmission line will have monopole structures located 1 m within the road allowance and a 15 m wide right-of-way will be required on property.

Construction workspace and access trails will be required along the potential transmission line. Guy anchors will be required at deflections. Further engineering will be completed and AltaLink will consult with affected stakeholders on additional details when available.

LEGEND

- Point Designation
- Potential Transmission Line
- - - Existing Transmission Line
- Right-of-Way Boundary
- ▭ Proposed Customer Substation
- ▭ Proposed Substation Target Area
- Residence
- Wellsite
- Municipal or County Boundary
- Pipeline
- River or Stream
- Road
- ▭ Crown Land
- ▭ Gravel Pit
- ▭ Oil and Gas Plant
- ▭ Water Body

NO:
 DRAWN: CH - Maskwa
 FILE NO.: Lone Butte-SM1
 REVISION: 0.00.00
 AL FOLDER: Lone Butte
DATE: 2024-11-26

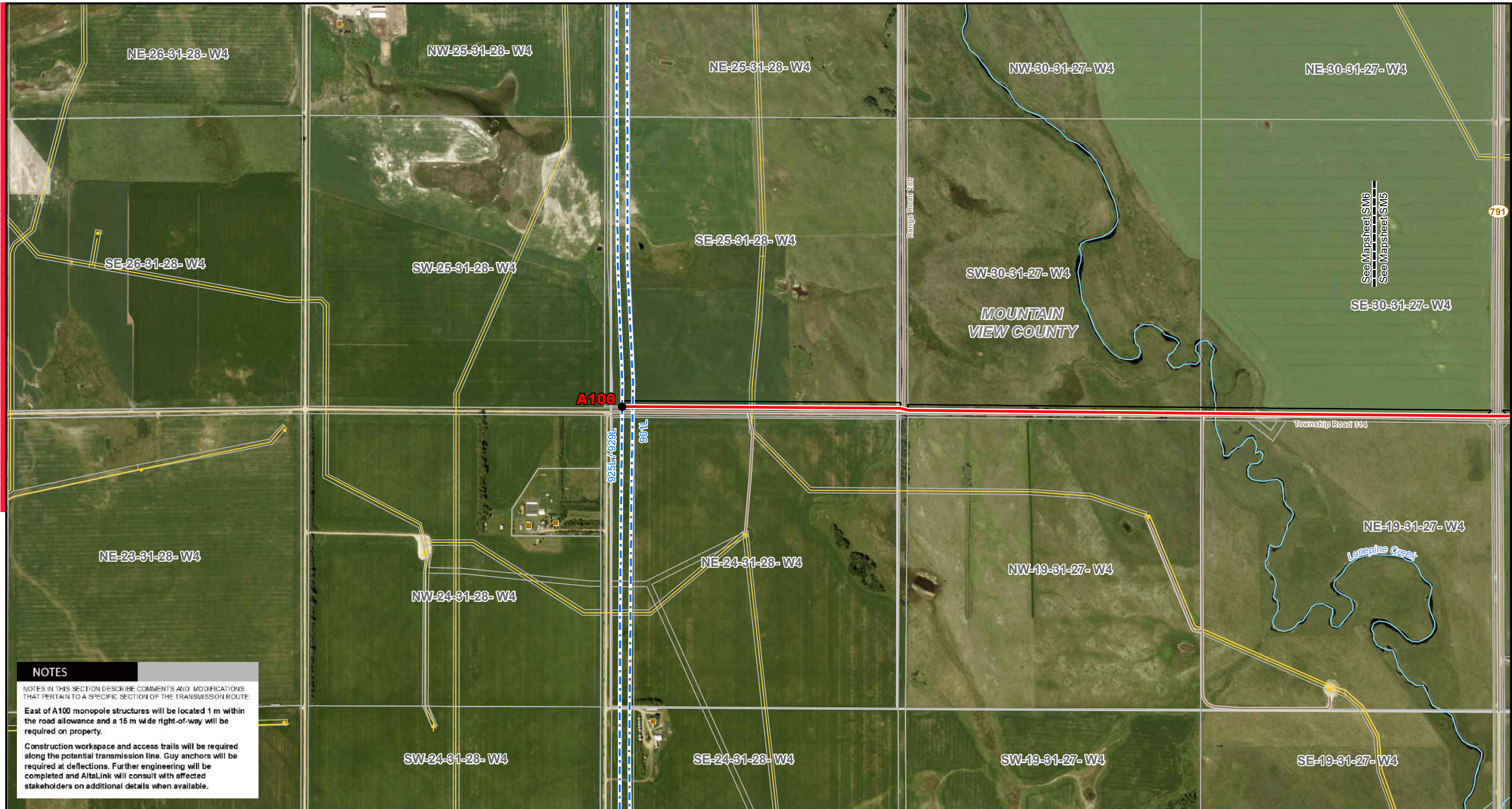


Photography dated: 2022. Source: Esri, Maxar, Earthstar Geographics, and the GIS User Community
 Although there is no reason to believe that there are any errors associated with the data used to generate this product or in the product itself, users of these data are advised that errors in the data may be present.

STRIP MOSAIC SM5



POTENTIAL
 Lone Butte Solar Connection Project
 240 kV TRANSMISSION LINE



NOTES

NOTES IN THIS SECTION DESCRIBE COMMENTS AND MODIFICATIONS THAT PERTAIN TO A SPECIFIC SECTION OF THE TRANSMISSION ROUTE.

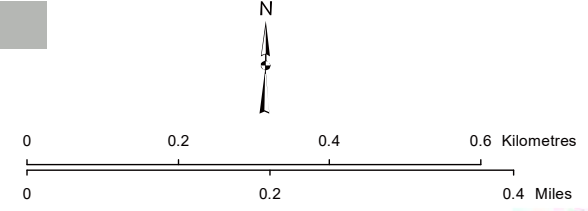
East of A100 monopole structures will be located 1 m within the road allowance and a 15 m wide right-of-way will be required on property.

Construction workspace and access trails will be required along the potential transmission line. Guy anchors will be required at deflections. Further engineering will be completed and AltaLink will consult with affected stakeholders on additional details when available.

LEGEND

- Point Designation
- Potential Transmission Line
- - - Existing Transmission Line
- Right-of-Way Boundary
- ▭ Proposed Customer Substation
- ▭ Proposed Substation Target Area
- Residence
- Wellsite
- Municipal or County Boundary
- Pipeline
- River or Stream
- Road
- ▭ Crown Land
- ▭ Gravel Pit
- ▭ Oil and Gas Plant
- ▭ Water Body

NO:
 DRAWN: CH - Maskwa
 FILE NO.: Lone Butte-SM1
 REVISION: 0.00.00
 AL FOLDER: Lone Butte
DATE: 2024-11-26



Photography dated: 2022. Source: Esri, Maxar, Earthstar Geographics, and the GIS User Community
 Although there is no reason to believe that there are any errors associated with the data used to generate this product or in the product itself, users of these data are advised that errors in the data may be present.

STRIP MOSAIC SM6



POTENTIAL
 Lone Butte Solar Connection Project
 240 kV TRANSMISSION LINE



Stewart Lake

NW-3-32-27- W4

NE-3-32-27- W4

NW-2-32-27- W4

NE-2-32-27- W4

NW-1-32-27- W4

NE-1-32-27- W4

See Mapsheet SM8
See Mapsheet SM7

SE-3-32-27- W4

SW-2-32-27- W4

SE-2-32-27- W4

SW-1-32-27- W4

See Mapsheet SM7
See Mapsheet SM1

SW-3-32-27- W4

SE-1-32-27- W4

MOUNTAIN
VIEW COUNTY

Township Road 320

NW-34-31-27- W4

NE-34-31-27- W4

NW-35-31-27- W4

NE-35-31-27- W4

NW-36-31-27- W4

NE-36-31-27- W4

SW-34-31-27- W4

SE-34-31-27- W4

SW-35-31-27- W4

SE-35-31-27- W4

SW-36-31-27- W4

NOTES

NOTES IN THIS SECTION DESCRIBE COMMENTS AND MODIFICATIONS THAT PERTAIN TO A SPECIFIC SECTION OF THE TRANSMISSION ROUTE.

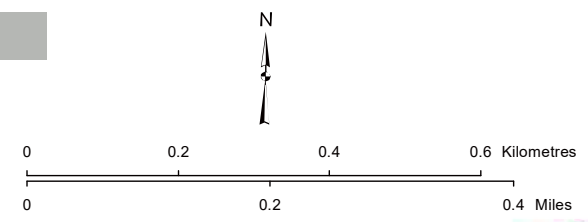
The potential transmission line will have monopole structures located 1 m within the road allowance and a 15 m wide right-of-way will be required on property.

Construction workspace and access trails will be required along the potential transmission line. Guy anchors will be required at deflections. Further engineering will be completed and AltaLink will consult with affected stakeholders on additional details when available.

LEGEND

- Point Designation
- Potential Transmission Line
- - - Existing Transmission Line
- Right-of-Way Boundary
- ▭ Proposed Customer Substation
- ▭ Proposed Substation Target Area
- Residence
- Wellsite
- Municipal or County Boundary
- Pipeline
- River or Stream
- Road
- ▭ Crown Land
- ▭ Gravel Pit
- ▭ Oil and Gas Plant
- ▭ Water Body

NO:
DRAWN: CH - Maskwa
FILE NO.: Lone Butte-SM1
REVISION: 0.00.00
AL FOLDER: Lone Butte
DATE: 2024-11-26



Photography dated: 2022. Source: Esri, Maxar, Earthstar Geographics, and the GIS User Community
Although there is no reason to believe that there are any errors associated with the data used to generate this product or in the product itself, users of these data are advised that errors in the data may be present.

STRIP MOSAIC SM7



POTENTIAL
Lone Butte Solar Connection Project
240 kV TRANSMISSION LINE



NOTES

NOTES IN THIS SECTION DESCRIBE COMMENTS AND MODIFICATIONS THAT PERTAIN TO A SPECIFIC SECTION OF THE TRANSMISSION ROUTE.

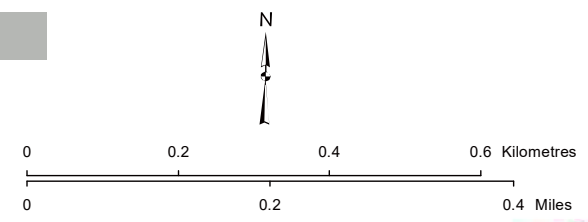
The potential transmission line will have monopole structures located 1 m within the road allowance and a 15 m wide right-of-way will be required on property.

Construction workspace and access trails will be required along the potential transmission line. Guy anchors will be required at deflections. Further engineering will be completed and AltaLink will consult with affected stakeholders on additional details when available.

LEGEND

- Point Designation
- Potential Transmission Line
- Existing Transmission Line
- Right-of-Way Boundary
- ▭ Proposed Customer Substation
- ▭ Proposed Substation Target Area
- Residence
- Wellsite
- Municipal or County Boundary
- Pipeline
- River or Stream
- Road
- ▭ Crown Land
- ▭ Gravel Pit
- ▭ Oil and Gas Plant
- ▭ Water Body

NO:
 DRAWN: CH - Maskwa
 FILE NO.: Lone Butte-SM1
 REVISION: 0.00.00
 AL FOLDER: Lone Butte
DATE: 2024-11-26



Photography dated: 2022. Source: Esri, Maxar, Earthstar Geographics, and the GIS User Community
 Although there is no reason to believe that there are any errors associated with the data used to generate this product or in the product itself, users of these data are advised that errors in the data may be present.

STRIP MOSAIC SM8



POTENTIAL
 Lone Butte Solar Connection Project
 240 kV TRANSMISSION LINE

NOTES

NOTES IN THIS SECTION DESCRIBE COMMENTS AND MODIFICATIONS THAT PERTAIN TO A SPECIFIC SECTION OF THE TRANSMISSION ROUTE.

East of B100 monopole structures will be located 1 m within the road allowance and a 16 m wide right-of-way will be required on property.

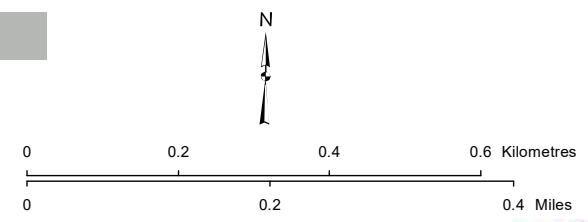
Construction workspace and access trails will be required along the potential transmission line. Guy anchors will be required at deflections. Further engineering will be completed and AltaLink will consult with affected stakeholders on additional details when available.



LEGEND

- Point Designation
- Potential Transmission Line
- Existing Transmission Line
- Right-of-Way Boundary
- ▭ Proposed Customer Substation
- ▭ Proposed Substation Target Area
- Residence
- Wellsite
- Municipal or County Boundary
- Pipeline
- River or Stream
- Road
- ▭ Crown Land
- ▭ Gravel Pit
- ▭ Oil and Gas Plant
- ▭ Water Body

NO:
 DRAWN: CH - Maskwa
 FILE NO.: Lone Butte-SM1
 REVISION: 0.00.00
 AL FOLDER: Lone Butte
DATE: 2024-11-26



Photography dated: 2022. Source: Esri, Maxar, Earthstar Geographics, and the GIS User Community
 Although there is no reason to believe that there are any errors associated with the data used to generate this product or in the product itself, users of these data are advised that errors in the data may be present.

STRIP MOSAIC SM9

POTENTIAL
 Lone Butte Solar Connection Project
 240 kV TRANSMISSION LINE



SE-13-32-27-W4

SW-13-32-26-W4

Township Road 322

SW-17-32-26-W4

SE-17-32-26-W4

SW-16-32-26-W4

NOTES

NOTES IN THIS SECTION DESCRIBE COMMENTS AND MODIFICATIONS THAT PERTAIN TO A SPECIFIC SECTION OF THE TRANSMISSION ROUTE:

From A1 to Lone Butte Substation a 20 m wide right-of-way will be required.

North of A1 monopole structures will be located 1 m within the road allowance and a 15 m wide right-of-way will be required on property.

Construction workspace and access trails will be required along the potential transmission line. Guy anchors will be required at deflections. Further engineering will be completed and AltaLink will consult with affected stakeholders on additional details when available.

NW-7-32-26-W4

NE-7-32-26-W4

NW-8-32-26-W4

NE-8-32-26-W4

NW-9-32-26-W4

See Mapsheet SM11
See Mapsheet SM10

Range Road 270

Range Road 200

KNEEHILL COUNTY

SW-7-32-26-W4

SE-7-32-26-W4

SW-8-32-26-W4

SE-8-32-26-W4

SW-9-32-26-W4

SE-12-32-27-W4

MOUNTAIN VIEW COUNTY

Stewart Lake

NW-6-32-26-W4

NE-6-32-26-W4

NW-5-32-26-W4

NE-5-32-26-W4

NW-4-32-26-W4

See Mapsheet SM10
See Mapsheet SM1

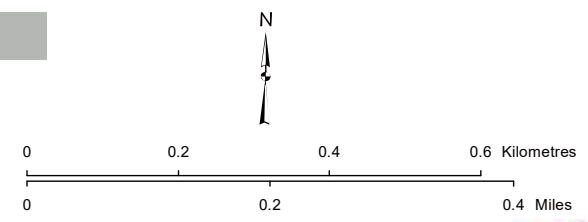
A1

Lone Butte
1801S
Substation

LEGEND

- Point Designation
- Potential Transmission Line
- - - Existing Transmission Line
- Right-of-Way Boundary
- ▭ Proposed Customer Substation
- ▭ Proposed Substation Target Area
- Residence
- Wellsite
- Municipal or County Boundary
- Pipeline
- River or Stream
- Road
- ▭ Crown Land
- ▭ Gravel Pit
- ▭ Oil and Gas Plant
- ▭ Water Body

NO:
DRAWN: CH - Maskwa
FILE NO.: Lone Butte-SM1
REVISION: 0.00.00
AL FOLDER: Lone Butte
DATE: 2024-11-26

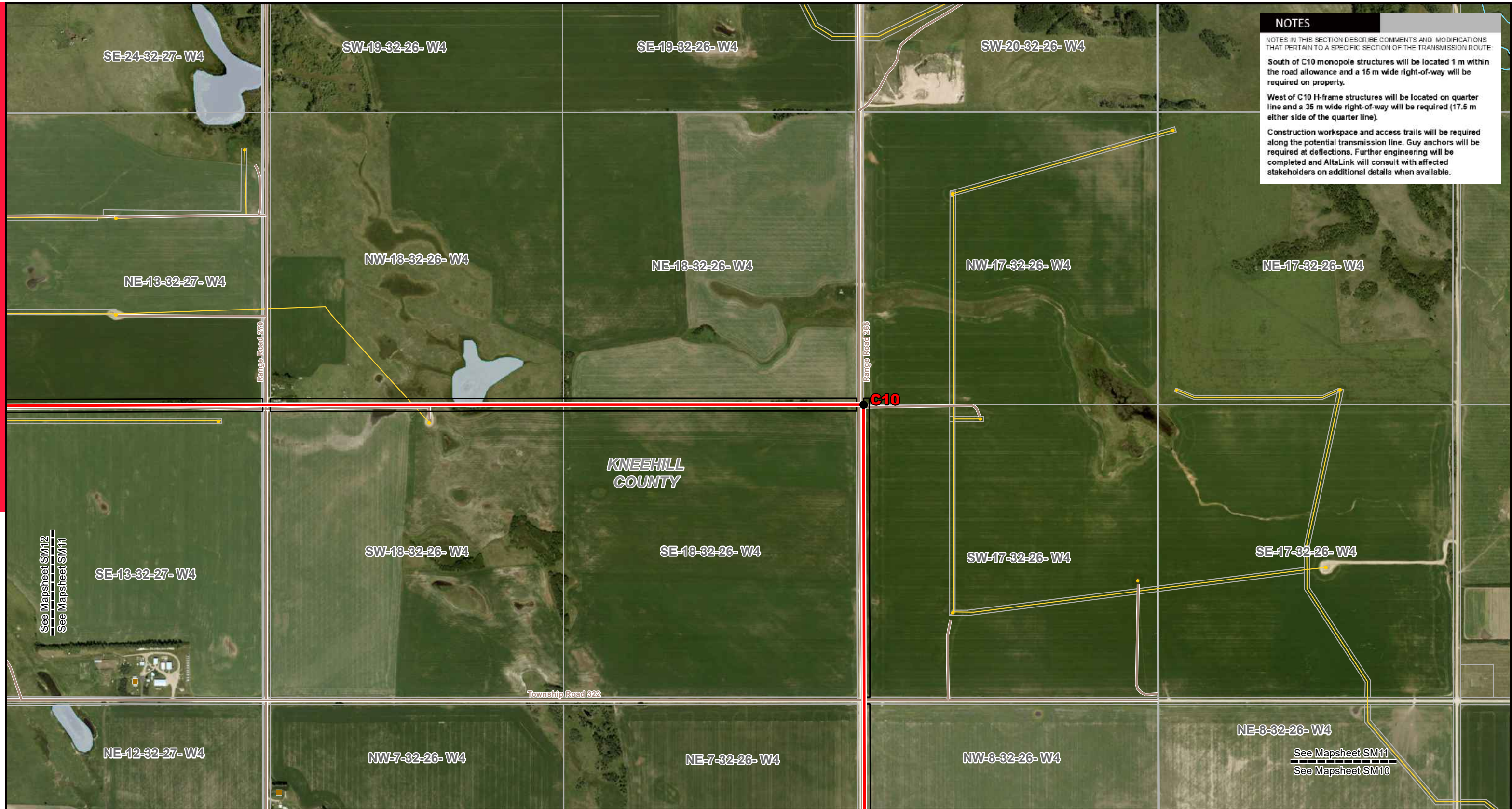


STRIP MOSAIC SM10



POTENTIAL
Lone Butte Solar Connection Project
240 kV TRANSMISSION LINE

Photography dated: 2022. Source: Esri, Maxar, Earthstar Geographics, and the GIS User Community
Although there is no reason to believe that there are any errors associated with the data used to generate this product or in the product itself, users of these data are advised that errors in the data may be present.



NOTES

NOTES IN THIS SECTION DESCRIBE COMMENTS AND MODIFICATIONS THAT PERTAIN TO A SPECIFIC SECTION OF THE TRANSMISSION ROUTE:

South of C10 monopole structures will be located 1 m within the road allowance and a 15 m wide right-of-way will be required on property.

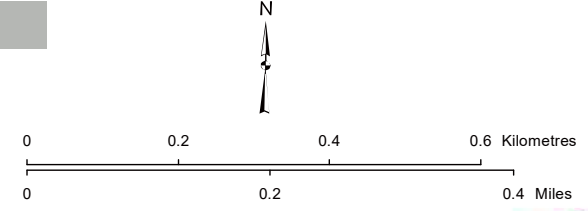
West of C10 H-frame structures will be located on quarter line and a 35 m wide right-of-way will be required (17.5 m either side of the quarter line).

Construction workspace and access trails will be required along the potential transmission line. Guy anchors will be required at deflections. Further engineering will be completed and AltaLink will consult with affected stakeholders on additional details when available.

LEGEND

- Point Designation
- Potential Transmission Line
- - - Existing Transmission Line
- Right-of-Way Boundary
- ▭ Proposed Customer Substation
- ▭ Proposed Substation Target Area
- Residence
- Wellsite
- Municipal or County Boundary
- Pipeline
- River or Stream
- Road
- ▭ Crown Land
- ▭ Gravel Pit
- ▭ Oil and Gas Plant
- ▭ Water Body

NO:
 DRAWN: CH - Maskwa
 FILE NO.: Lone Butte-SM1
 REVISION: 0.00.00
 AL FOLDER: Lone Butte
DATE: 2024-11-26

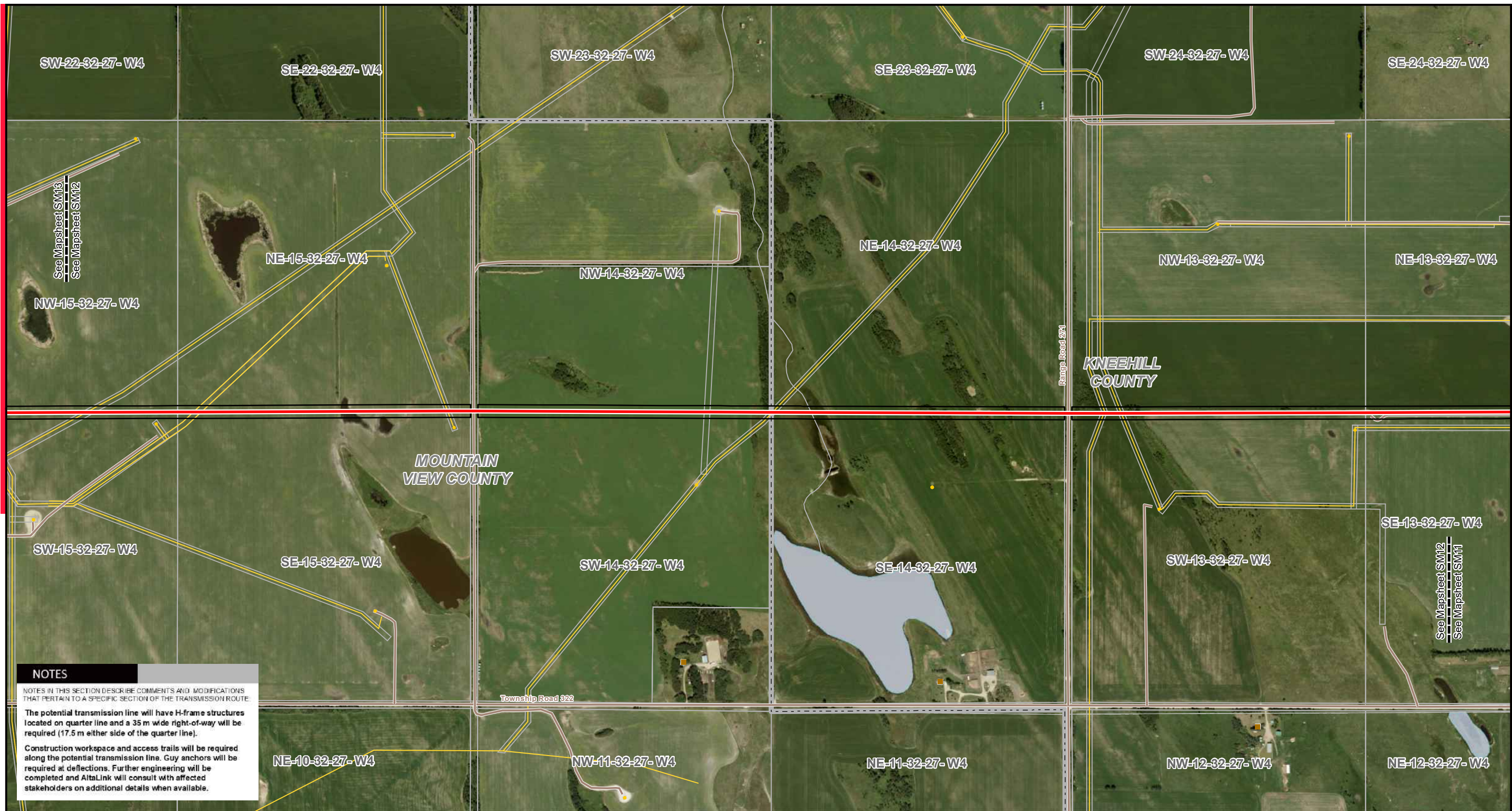


Photography dated: 2022. Source: Esri, Maxar, Earthstar Geographics, and the GIS User Community
 Although there is no reason to believe that there are any errors associated with the data used to generate this product or in the product itself, users of these data are advised that errors in the data may be present.

STRIP MOSAIC SM11



POTENTIAL
 Lone Butte Solar Connection Project
 240 kV TRANSMISSION LINE



NOTES

NOTES IN THIS SECTION DESCRIBE COMMENTS AND MODIFICATIONS THAT PERTAIN TO A SPECIFIC SECTION OF THE TRANSMISSION ROUTE.

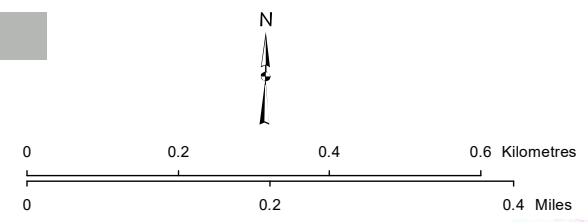
The potential transmission line will have H-frame structures located on quarter line and a 35 m wide right-of-way will be required (17.5 m either side of the quarter line).

Construction workspace and access trails will be required along the potential transmission line. Guy anchors will be required at deflections. Further engineering will be completed and AltaLink will consult with affected stakeholders on additional details when available.

LEGEND

- Point Designation
- Potential Transmission Line
- - - Existing Transmission Line
- Right-of-Way Boundary
- ▭ Proposed Customer Substation
- ▭ Proposed Substation Target Area
- Residence
- Wellsite
- Municipal or County Boundary
- Pipeline
- River or Stream
- Road
- ▭ Crown Land
- ▭ Gravel Pit
- ▭ Oil and Gas Plant
- ▭ Water Body

NO:
 DRAWN: CH - Maskwa
 FILE NO.: Lone Butte-SM1
 REVISION: 0.00.00
 AL FOLDER: Lone Butte
DATE: 2024-11-26

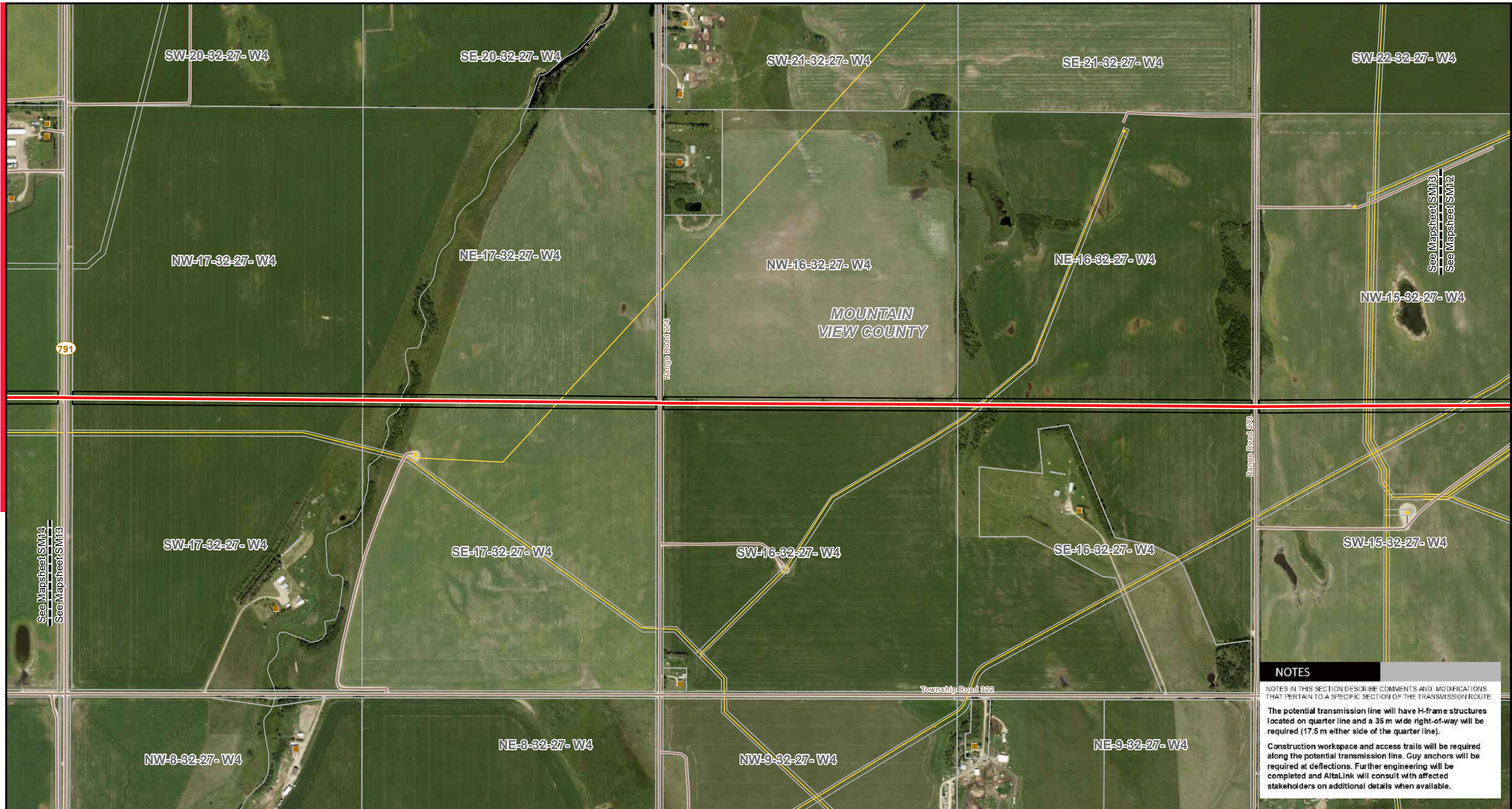


Photography dated: 2022. Source: Esri, Maxar, Earthstar Geographics, and the GIS User Community
 Although there is no reason to believe that there are any errors associated with the data used to generate this product or in the product itself, users of these data are advised that errors in the data may be present.

STRIP MOSAIC SM12



POTENTIAL
 Lone Butte Solar Connection Project
 240 kV TRANSMISSION LINE



See Mapsheet SM13
See Mapsheet SM12

See Mapsheet SM14
See Mapsheet SM13

NOTES

NOTES IN THIS SECTION DESCRIBE COMMENTS AND MODIFICATIONS THAT PERTAIN TO A SPECIFIC SECTION OF THE TRANSMISSION ROUTE.

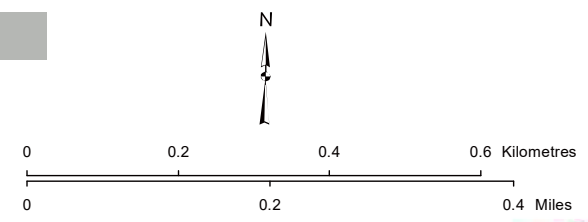
The potential transmission line will have H-frame structures located on quarter line and a 35 m wide right-of-way will be required (17.5 m either side of the quarter line).

Construction workspace and access trails will be required along the potential transmission line. Guy anchors will be required at deflections. Further engineering will be completed and AltaLink will consult with affected stakeholders on additional details when available.

LEGEND

- Point Designation
- Potential Transmission Line
- - - Existing Transmission Line
- Right-of-Way Boundary
- ▭ Proposed Customer Substation
- ▭ Proposed Substation Target Area
- Residence
- Wellsite
- Municipal or County Boundary
- Pipeline
- River or Stream
- Road
- ▭ Crown Land
- ▭ Gravel Pit
- ▭ Oil and Gas Plant
- ▭ Water Body

NO:
DRAWN: CH - Maskwa
FILE NO.: Lone Butte-SM1
REVISION: 0.00.00
AL FOLDER: Lone Butte
DATE: 2024-11-26

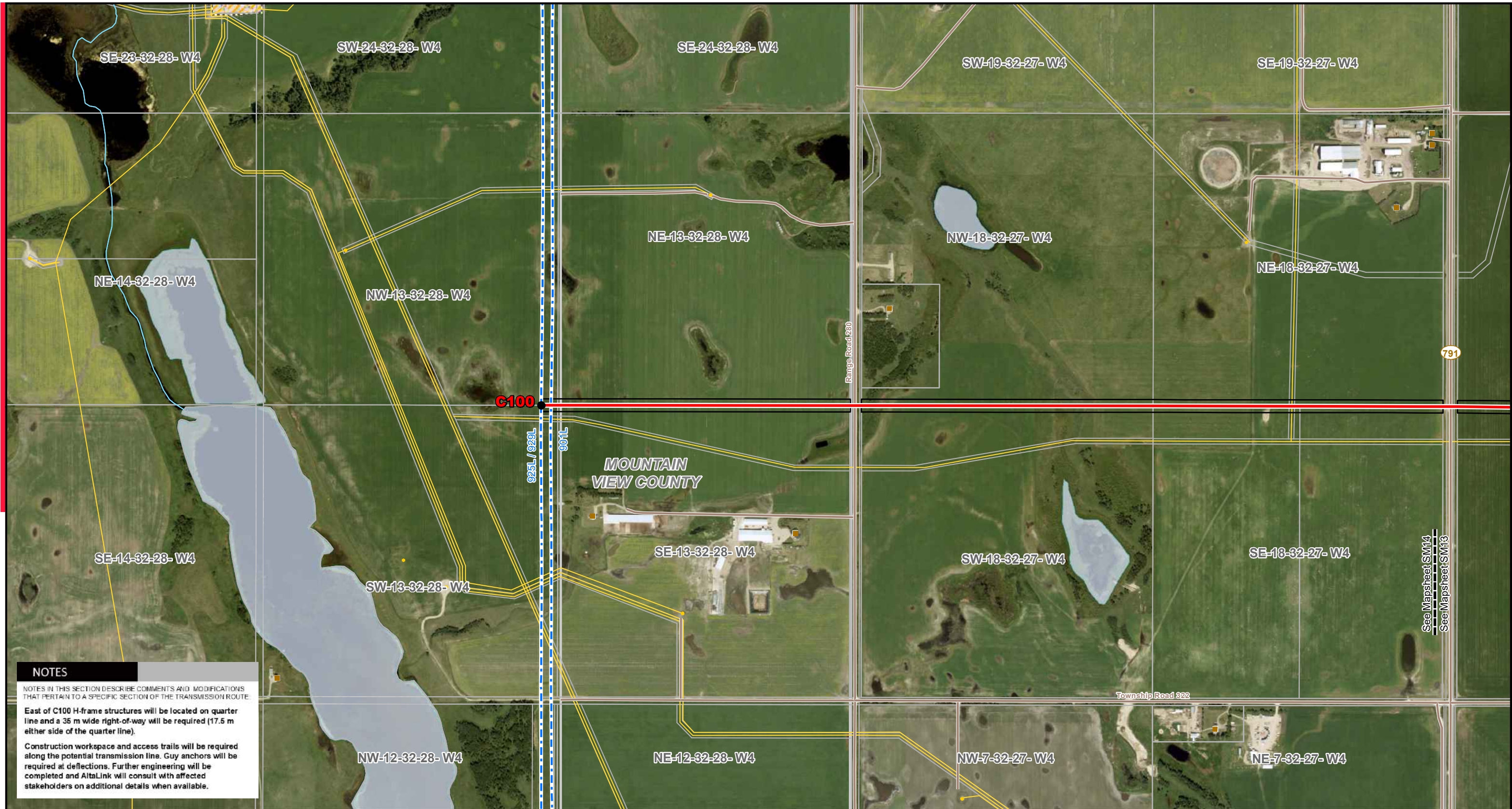


Photography dated: 2022. Source: Esri, Maxar, Earthstar Geographics, and the GIS User Community
Although there is no reason to believe that there are any errors associated with the data used to generate this product or in the product itself, users of these data are advised that errors in the data may be present.

STRIP MOSAIC SM13



POTENTIAL
Lone Butte Solar Connection Project
240 kV TRANSMISSION LINE



NOTES

NOTES IN THIS SECTION DESCRIBE COMMENTS AND MODIFICATIONS THAT PERTAIN TO A SPECIFIC SECTION OF THE TRANSMISSION ROUTE.

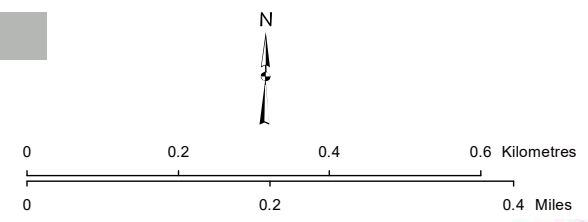
East of C100 H-frame structures will be located on quarter line and a 35 m wide right-of-way will be required (17.5 m either side of the quarter line).

Construction workspace and access trails will be required along the potential transmission line. Guy anchors will be required at deflections. Further engineering will be completed and AltaLink will consult with affected stakeholders on additional details when available.

LEGEND

- Point Designation
- Potential Transmission Line
- Existing Transmission Line
- Right-of-Way Boundary
- ▭ Proposed Customer Substation
- ▭ Proposed Substation Target Area
- Residence
- Wellsite
- Municipal or County Boundary
- Pipeline
- River or Stream
- Road
- ▭ Crown Land
- ▭ Gravel Pit
- ▭ Oil and Gas Plant
- ▭ Water Body

NO:
 DRAWN: CH - Maskwa
 FILE NO.: Lone Butte-SM1
 REVISION: 0.00.00
 AL FOLDER: Lone Butte
DATE: 2024-11-26



Photography dated: 2022. Source: Esri, Maxar, Earthstar Geographics, and the GIS User Community
 Although there is no reason to believe that there are any errors associated with the data used to generate this product or in the product itself, users of these data are advised that errors in the data may be present.

STRIP MOSAIC SM14

POTENTIAL
 Lone Butte Solar Connection Project
 240 kV TRANSMISSION LINE

See Mapsheet SM14
 See Mapsheet SM13