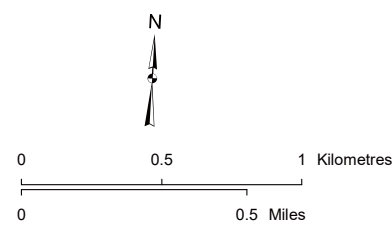


LEGEND

- Point Designation
- Hamlet or Locality
- ▲ Potential Telecommunication Tower / Tour de télécommunications
- Residence
- Potential Transmission Line
- Railway
- - - Existing Transmission Line
- Road
- Potential Right of Way Boundary
- Water Body
- Potential Customer Substation Target Area
- Map Sheet

NO: 35034634 - 6103
 DRAWN: SG - AL
 FILE NO.: XXXXXXX
 REVISION: 0.01.04
 AL FOLDER: Rising Sun Solar
DATE: 2024-08-15

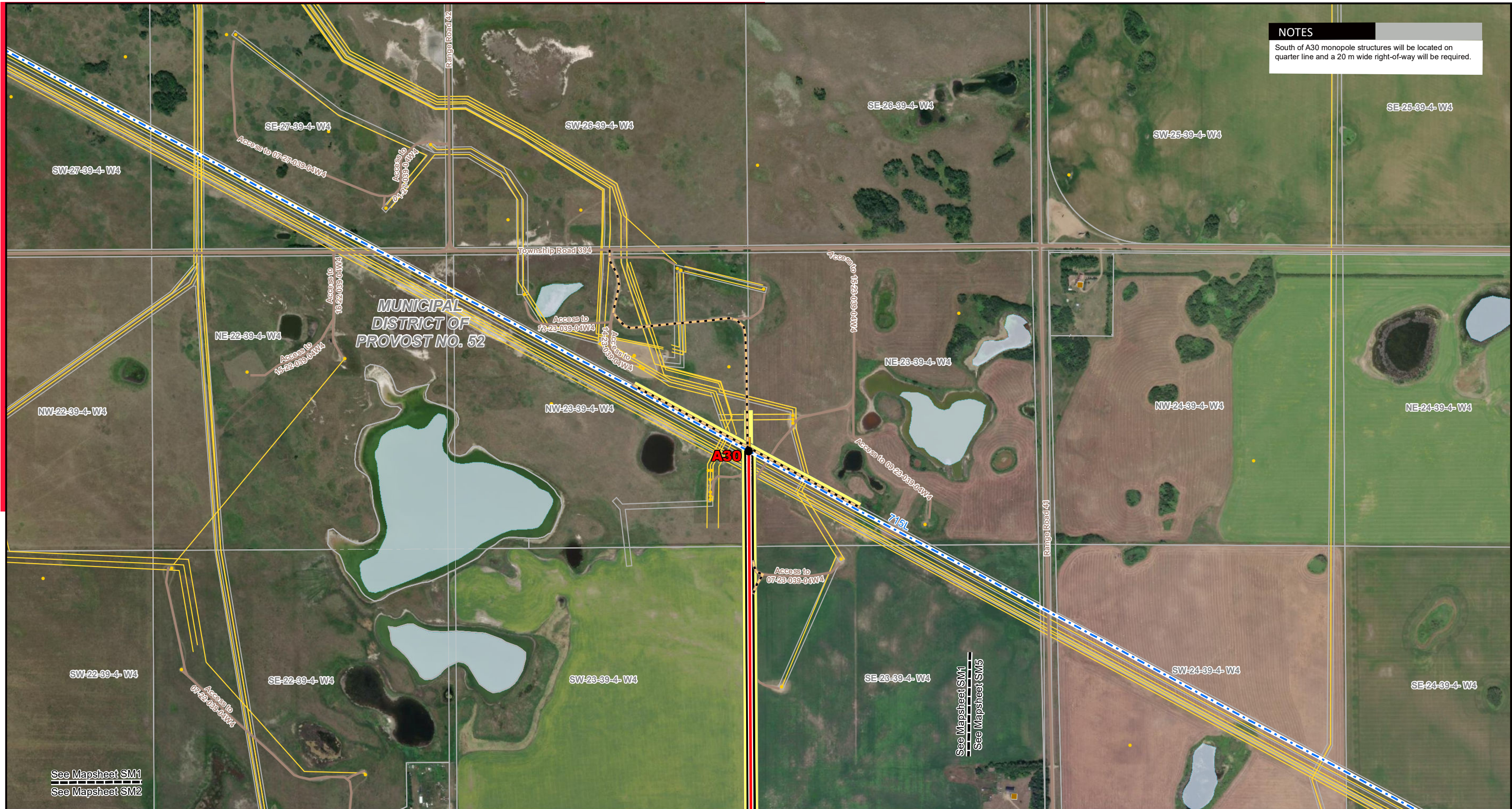


STRIP INDEX SI

POTENTIAL
 Rising Sun Solar Connection Project
 715BL Transmission Line

Although there is no reason to believe that there are any errors associated with the data used to generate this product or in the product itself, users of these data are advised that errors in the data may be present.

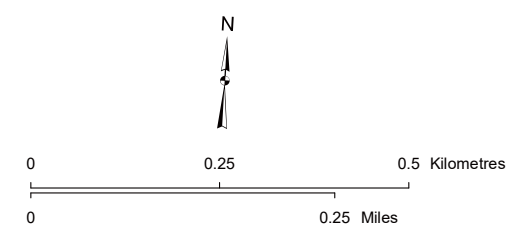
NOTES
 South of A30 monopole structures will be located on quarter line and a 20 m wide right-of-way will be required.



LEGEND

- Point Designation
- ▲ Potential Telecommunication Tower / Tour de télécommunications
- Potential Transmission Line
- - - Existing Transmission Line
- Potential Right of Way Boundary
- Potential Customer Substation Target Area
- - - Access Trail
- Potential Guy Anchor Box
- Temporary Workspace
- † Cemetery
- Residence
- Wellsite
- Pipeline
- Road
- Water Body

NO: 35034634 - 6103
 DRAWN: SG - AL
 FILE NO.: XXXXXXXX
 REVISION: 0.03.04
 AL FOLDER: Rising Sun Solar
DATE: 2024-08-15



*Service Layer Credits: Source: Esri, Maxar, Earthstar Geographics, and the GIS User Community
 Although there is no reason to believe that there are any errors associated with the data used to generate this product or in the product itself, users of these data are advised that errors in the data may be present.*

STRIP MOSAIC SM1



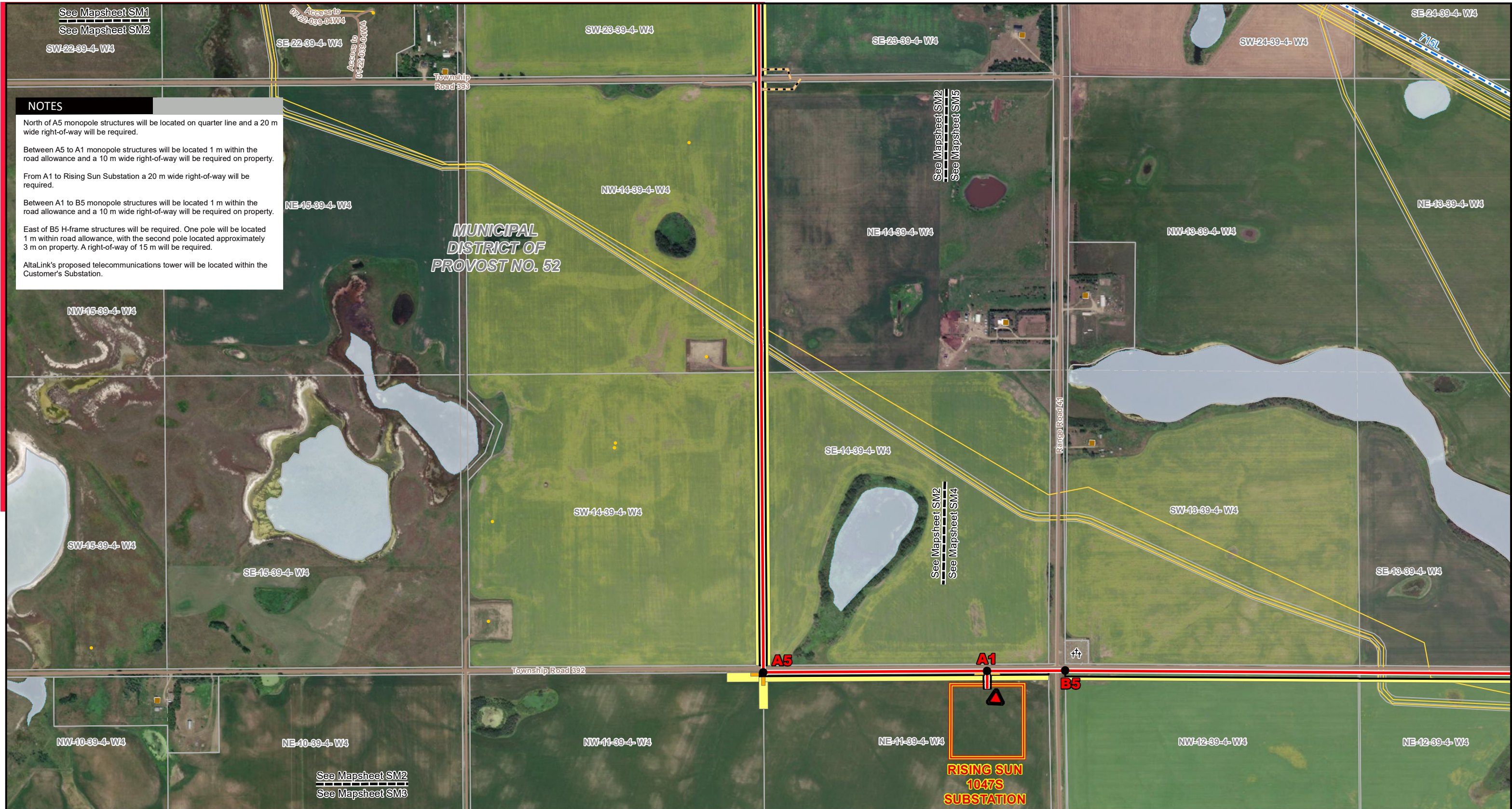
POTENTIAL

Rising Sun Solar Connection Project

715BL Transmission Line

See Mapsheet SM1
 See Mapsheet SM2

See Mapsheet SM1
 See Mapsheet SM5



NOTES

North of A5 monopole structures will be located on quarter line and a 20 m wide right-of-way will be required.

Between A5 to A1 monopole structures will be located 1 m within the road allowance and a 10 m wide right-of-way will be required on property.

From A1 to Rising Sun Substation a 20 m wide right-of-way will be required.

Between A1 to B5 monopole structures will be located 1 m within the road allowance and a 10 m wide right-of-way will be required on property.

East of B5 H-frame structures will be required. One pole will be located 1 m within road allowance, with the second pole located approximately 3 m on property. A right-of-way of 15 m will be required.

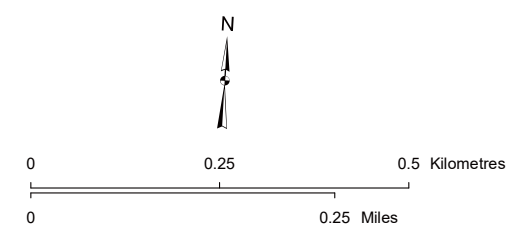
AltaLink's proposed telecommunications tower will be located within the Customer's Substation.

MUNICIPAL DISTRICT OF PROVOST NO. 52

LEGEND

● Point Designation	■ Potential Guy Anchor Box	■ Water Body
▲ Potential Telecommunication Tower / Tour de télécommunications	■ Temporary Workspace	
— Potential Transmission Line	⛳ Cemetery	
- - - Existing Transmission Line	■ Residence	
— Potential Right of Way Boundary	● Wellsite	
■ Potential Customer Substation Target Area	— Pipeline	
— Access Trail	— Road	

NO: 35034634 - 6103
 DRAWN: SG - AL
 FILE NO.: XXXXXXXX
 REVISION: 0.03.04
 AL FOLDER: Rising Sun Solar
DATE: 2024-08-15



STRIP MOSAIC SM2



POTENTIAL
 Rising Sun Solar Connection Project
 715BL Transmission Line

*Service Layer Credits: Source: Esri, Maxar, Earthstar Geographics, and the GIS User Community
 Although there is no reason to believe that there are any errors associated with the data used to generate this product or in the product itself, users of these data are advised that errors in the data may be present.*



See Mapsheet SM2
See Mapsheet SM3

NOTES

North of A5 monopole structures will be located on quarter line and a 20 m wide right-of-way will be required.

Between A5 to A1 monopole structures will be located 1 m within the road allowance and a 10 m wide right-of-way will be required on property.

From A1 to Rising Sun Substation a 20 m wide right-of-way will be required.

Between A1 to B5 monopole structures will be located 1 m within the road allowance and a 10 m wide right-of-way will be required on property.

Between B5 to B20 H-frame structures will be required. One pole will be located 1 m within road allowance, with the second pole located approximately 3 m on property. A right-of-way of 15 m will be required.

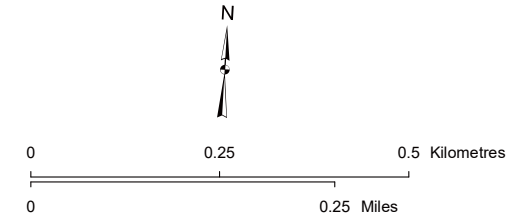
North of B20 H-frame structures will be required. One pole will be located 1 m within road allowance, with the second pole located approximately 3 m on property. A right-of-way of 15 m will be required.

AltaLink's proposed telecommunications tower will be located within the Customer's Substation.

LEGEND

- Point Designation
- ▲ Potential Telecommunication Tower / Tour de télécommunications
- Potential Transmission Line
- - - Existing Transmission Line
- Potential Right of Way Boundary
- ▭ Potential Customer Substation Target Area
- Access Trail
- ▭ Potential Guy Anchor Box
- ▭ Temporary Workspace
- †† Cemetery
- Residence
- Wellsite
- Pipeline
- Road
- Water Body

NO: 35034634 - 6103
DRAWN: SG - AL
FILE NO.: XXXXXXXX
REVISION: 0.03.04
AL FOLDER: Rising Sun Solar
DATE: 2024-08-15



STRIP MOSAIC SM3



POTENTIAL
Rising Sun Solar Connection Project
715BL Transmission Line

*Service Layer Credits: Source: Esri, Maxar, Earthstar Geographics, and the GIS User Community
Although there is no reason to believe that there are any errors associated with the data used to generate this product or in the product itself, users of these data are advised that errors in the data may be present.*

See Mapsheet SM3
See Mapsheet SM4

**MUNICIPAL DISTRICT
OF PROVOST NO. 52**



NOTES

East of A1 monopole structures will be located 1 m within the road allowance and a 10 m wide right-of-way will be required on property.

From A1 to Rising Sun Substation a 20 m wide right-of-way will be required.

Between A1 to B5 monopole structures will be located 1m within the road allowance and a 10 m wide right-of-way will be required on property.

Between B5 to B20 H-frame structures will be required. One pole will be located 1 m within road allowance, with the second pole located approximately 3 m on property. A right-of-way of 15 m will be required.

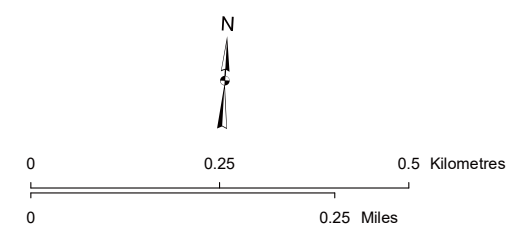
North of B20 H-frame structures will be required. One pole will be located 1 m within road allowance, with the second pole located approximately 3 m on property. A right-of-way of 15 m will be required.

AltaLink's proposed telecommunications tower will be located within the Customer's Substation.

LEGEND

- Point Designation
- ▲ Potential Telecommunication Tower / Tour de télécommunications
- Potential Transmission Line
- - - Existing Transmission Line
- Potential Right of Way Boundary
- ▭ Potential Customer Substation Target Area
- Access Trail
- Potential Guy Anchor Box
- Temporary Workspace
- †† Cemetery
- Residence
- Wellsite
- Pipeline
- Road
- Water Body

NO: 35034634 - 6103
DRAWN: SG - AL
FILE NO.: XXXXXXX
REVISION: 0.03.04
AL FOLDER: Rising Sun Solar
DATE: 2024-08-15



STRIP MOSAIC SM4



POTENTIAL
Rising Sun Solar Connection Project
715BL Transmission Line

*Service Layer Credits: Source: Esri, Maxar, Earthstar Geographics, and the GIS User Community
Although there is no reason to believe that there are any errors associated with the data used to generate this product or in the product itself, users of these data are advised that errors in the data may be present.*

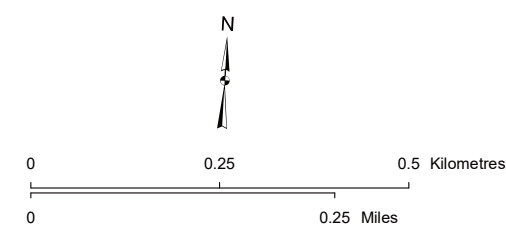
NOTES
 South of B40 H-frame structures will be required. One pole will be located 1 m within road allowance, with the second pole located approximately 3 m on property. A right-of-way of 15 m will be required.



LEGEND

- Point Designation
- ▲ Potential Telecommunication Tower / Tour de télécommunications
- Potential Transmission Line
- - - Existing Transmission Line
- Potential Right of Way Boundary
- ▭ Potential Customer Substation Target Area
- Access Trail
- ▭ Potential Guy Anchor Box
- ▭ Temporary Workspace
- † Cemetery
- Residence
- Wellsite
- Pipeline
- Road
- ▭ Water Body

NO: 35034634 - 6103
 DRAWN: SG - AL
 FILE NO.: XXXXXXXX
 REVISION: 0.03.04
 AL FOLDER: Rising Sun Solar
DATE: 2024-08-15



*Service Layer Credits: Source: Esri, Maxar, Earthstar Geographics, and the GIS User Community
 Although there is no reason to believe that there are any errors associated with the data used to generate this product or in the product itself, users of these data are advised that errors in the data may be present.*

STRIP MOSAIC SM5



POTENTIAL
 Rising Sun Solar Connection Project
 715BL Transmission Line