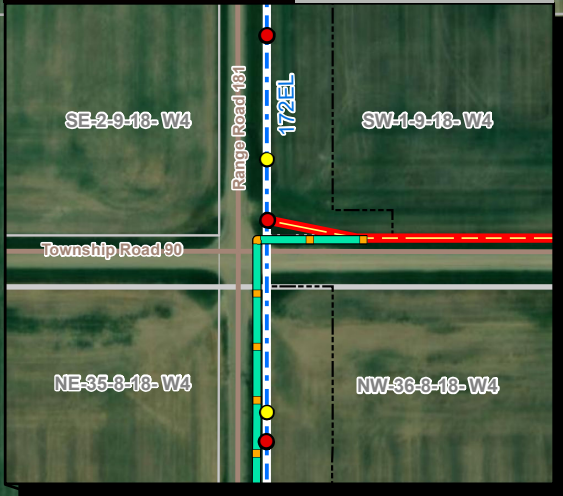


INSET MAP

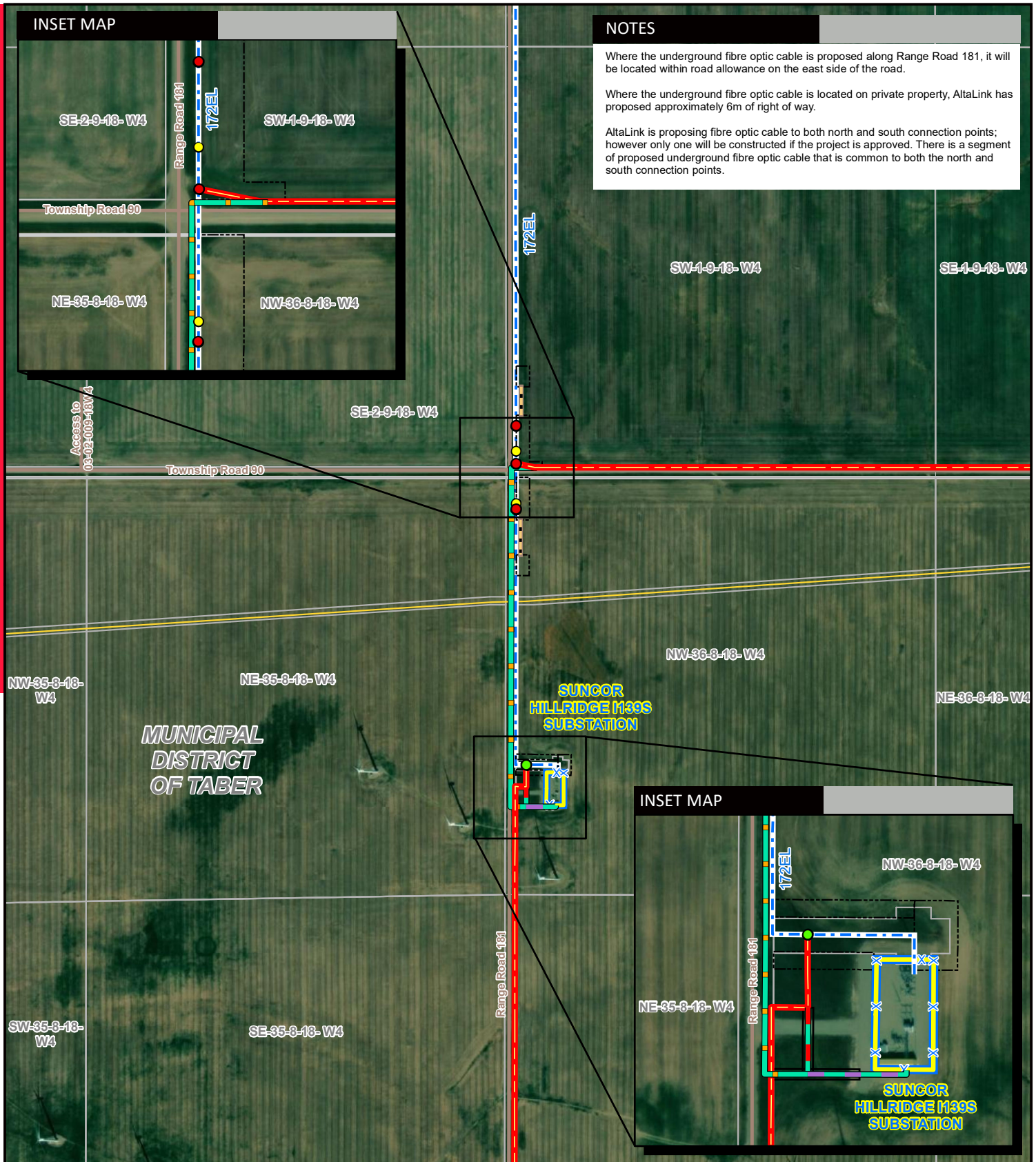


NOTES

Where the underground fibre optic cable is proposed along Range Road 181, it will be located within road allowance on the east side of the road.

Where the underground fibre optic cable is located on private property, AltaLink has proposed approximately 6m of right of way.

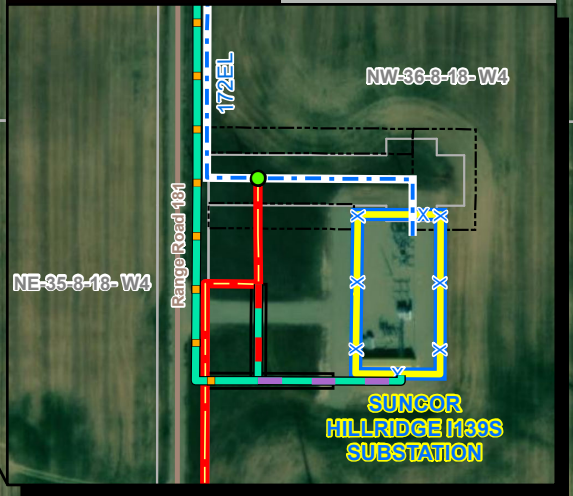
AltaLink is proposing fibre optic cable to both north and south connection points; however only one will be constructed if the project is approved. There is a segment of proposed underground fibre optic cable that is common to both the north and south connection points.



MUNICIPAL DISTRICT OF TABER

SUNGOR HILLRIDGE M39S SUBSTATION

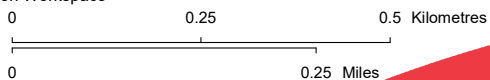
INSET MAP



LEGEND

- Potential New Structure
- Potential Structure Modification
- Potential Salvage of Existing Structure
- Potential Underground Fibre Optic Cable Common to North and South Connection Point
- Potential Underground Fibre Optic Cable to North Connection Point
- Potential Underground Fibre Optic Cable to South Connection Point
- Potential Customer Transmission Line
- - - Existing Transmission Line
- 6m Right-of-Way Boundary
- Access Trail
- Existing 3rd Party Substation Fenceline
- - - Construction Workspace
- Pipeline
- Road

NO: 35033598-6201
 DRAWN: SG - AL
 FILE NO.: XXXXXXXX
 REVISION: 0.00.01
 AL FOLDER: Tempest Wind Power Connection Project
DATE: 2023-06-07



Service Layer Credits: Source: Esri, Maxar, Earthstar Geographics, and the GIS User Community
 Although there is no reason to believe that there are any errors associated with the data used to generate this product or in the product itself, users of these data are advised that errors in the data may be present.

DETAIL PHOTO DP1



POTENTIAL
 Tempest Wind Power
 Connection Project